



**-Inspiration**  
**-Innovation**  
**-Global Competence**





# NBA Accreditation Expert Team Visit

# **OVERVIEW**

- ❖ **Introduction**
- ❖ **Academic & Curricular Aspects**
- ❖ **Student Progression and Support**
- ❖ **Infrastructure Support**
- ❖ **Human Resource Development**
- ❖ **Special Features**



# Our Journey, History & Mile Stones

4

1984

- ✓ Sri Lakshmi Ammal Educational Trust was established.
- ✓ Established Bharath Institute of Science and Technology (BIST).
- ✓ First Self Financing Engineering College in the state of Tamilnadu.

1989

- ✓ Established Sree Balaji Dental College & Hospital (SBDCH).
- ✓ First Self Financing Dental College in Tamilnadu.

1991

- ✓ Department of Architecture established in BIST.

1992

- ✓ Established Sree Balaji College of Nursing.

1993

- ✓ BIST- First institution in India to offer B.Tech (Leather Technology).





# Our Journey, History & Mile Stones

5

1994

✓ Established Sree Balaji College of Physiotherapy.

1995

✓ Established the society –BIHER

2002

✓ Engineering Departments of BIST accredited by the NBA.  
✓ BIHER declared as Deemed to be University u/s 3 of UGC Act 1956

2003

✓ Bio Engineering Departments established.  
✓ Established SBMCH under the ambit of BIHER.

2006

✓ Establishment of Internal Quality Assurance Cell (IQAC).  
✓ BIHER Accredited by NAAC.



# Our Journey, History & Mile Stones

6

2007

- ✓ Established Sri Lakshmi Narayana Institute of Medical Sciences (SLIMS).



2010

- ✓ Silver & Bronze Medal - Under Water & Home Robot NTU, Singapore.



2012

- ✓ Introduced CBCS in Engineering & Technology.
- ✓ Established IoT Research lab.
- ✓ 1st Prize Winner - International Robotics Competition at Tehran, IRAN.



2013

- ✓ 1st Prize Winner - Robotics Competition - International Level - Istanbul, TURKEY



# Our Journey, History & Mile Stones

7

2014

- ✓ Awards by MHRD & ASSOCHAM  
Best Multi Stream University & Most Innovative Education Institute.
- ✓ BHARATH BOSCH Joint Training Centre
- ✓ Research on Cancer Detection by Advanced Thermography.



2015

- ✓ Awards by World Education Summit, DUBAI  
(Best Globalised Higher Education Institution).
- ✓ Re- Accredited by NAAC – “A” grade with a score of 3.20
- ✓ Recognition of SIRO (Scientific & Industrial Research Organisation).



2016

- ✓ Awards by MHRD & ASSOCHAM - Best Private University.
- ✓ DATA 64 - Cyber Forensic Research Lab.



2017

- ✓ NIRF 2017 ranked No.1 in INDIA - Outreach & Inclusivity.
- ✓ Ranked No. 6 among Private Universities.
- ✓ ABET – USA International Accreditation.\*



National Institutional Ranking Framework  
Ministry of Human Resource Development  
Government of India





# Our Journey, History & Mile Stones

8

2018

- ✓ **NIRF 2018** ranked **No.2** in INDIA - Outreach & Inclusivity.
- ✓ No. 5 among Private Universities.
- ✓ DST - FIST funding for Human Genetics Laboratory.



2019

- ✓ Established **Bhaarath Medical College and Hospital**
- ✓ **NIRF 2019** Ranked 36 in University Category
- ✓ **QS I-GAUGE - Indian College and University Rating - GOLD**



National Institutional Ranking Framework  
Ministry of Human Resource Development  
Government of India

2020

- ✓ Established **Bhaarath College of Nursing**
- ✓ **NIRF 2020** Ranked 59 in University Category



2021

- ✓ Awards by MHW - Top Ranked as Private University of Eminence
- ✓ Awards by MHRD & ASSOCHAM - University of the Year –South
- ✓ **SCIMAGO- Ranked No. 1 in Research**



# STRENGTH OF THE INSTITUTION

| Background | Governance | Academic | Research

9

- ✓ Our Chancellor Prof. Dr. Mohamed RELA ( Former Prof.- Kings College , London), the World's Best Liver Transplant Surgeon performed more than 4000 liver transplant surgeries, successful liver transplantation for a five-day-old girl which made him enter the Guinness Book of Records in 2000. He has successfully done Swap liver transplantation on Adults - First of its kind in India. He is the only liver surgeon in INDIA with over 500 Scientific Publications.
- ✓ Flexible Autonomy – Academic, Administration & Finance - National & International advisory board – Experts from multi disciplines.



# STRENGTH OF THE INSTITUTION

| Background | Governance | Academic | Research

10

- ✓ BIHER - Multi Stream University – Privileged location – Heart of Chennai city & Puducherry.
- ✓ 4 Campus, 6 Constituent Colleges, 11 Faculties, 18 Schools, 44 UG Programs, 67 PG programs, 1 Diploma Program and Research Programs (M.S, Ph.D, PDF).
- ✓ 2101 Permanent faculty and 3609 Non Teaching Staff with Students Strength 18372 (1:9 Faculty : Students ratio).
- ✓ Strong track record of graduate outcomes – more than 93% of the students find employability and pursue higher education in leading educational Institutions across the world, more than 450 companies, Rs.4.5 lakhs Median annual CTC.
- ✓ Industry – Institute Interactions labs with BOSCH, IBM, CISCO, Data 64, SAP, ATOS, Cybernoid, NICHE – Japan.





## STRENGTH OF THE INSTITUTION

| Background | Governance | Academic | Research

- ✓ Virtual class rooms, ICT, EDUSAT, NPTEL, MOOCs, etc., modules to provide access to courses from top institutions.
- ✓ State of Art Student amenities – Hostel , Health Centre, Cosmopolitan Cafeteria , Sports, Gym, Recreation facilities, etc.,
- ✓ Last 5 years – more than 1000 Medical camps, 500 Villages, Planted more than 50,000 Saplings.
- ✓ Swachh Bharath, Swachhta Pakhwada, Unnat Bharath Abhiyan , NCC, NSS, YRC, RRC etc., for holistic development.
- ✓ Nearly - 55% Girl students, 75% Other state students, 85% Economically & Socially challenged students, 43% Women faculty.



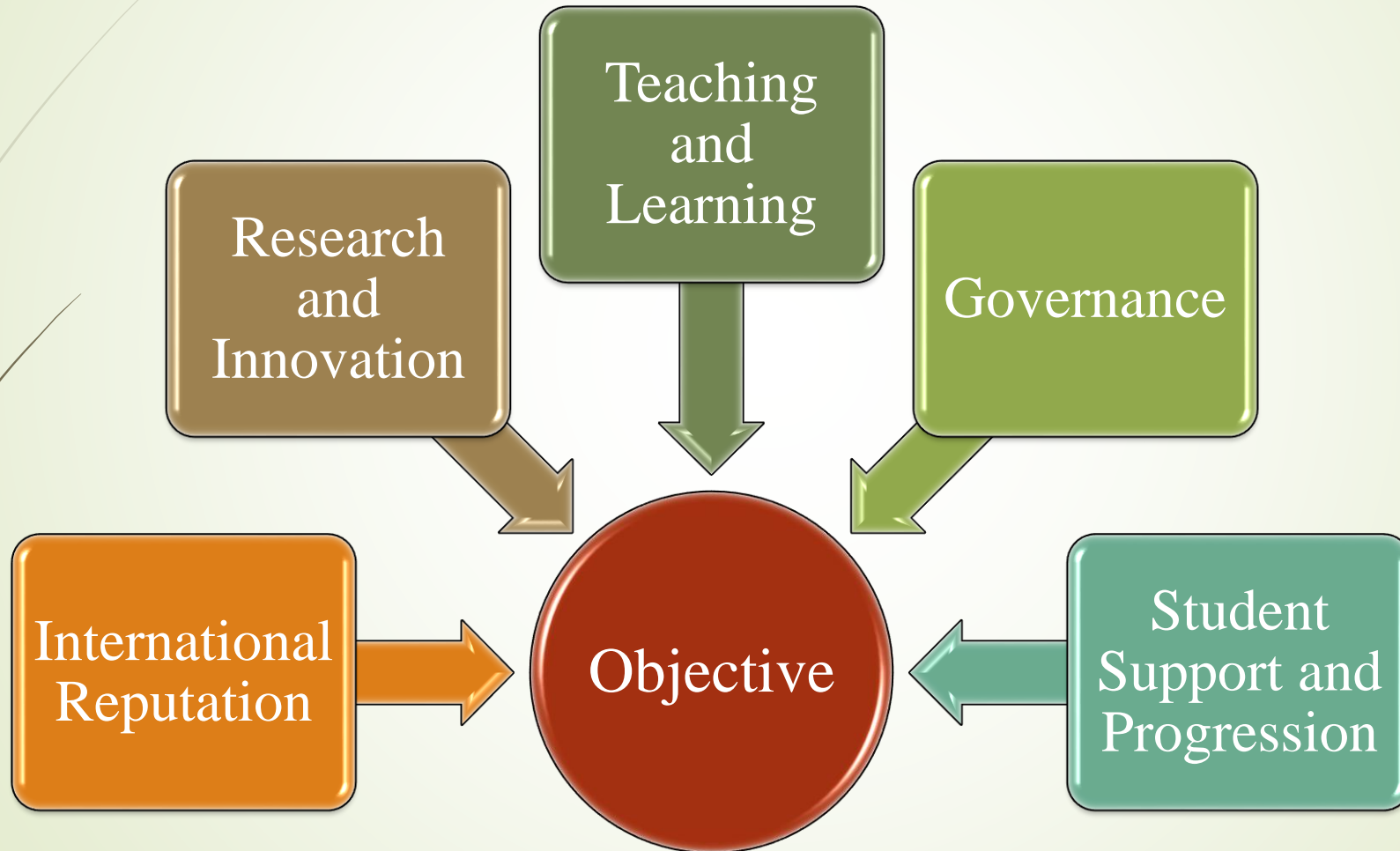
## VISION

**We at BIHER envision and constantly strive to provide an excellent academic and research ambience for students and members of the faculties to inherit professional competence along with human dignity and values to serve the society at large.**

## • MISSION

- **To develop as a Premier University for Teaching, Learning, Research and Innovation in par with leading global universities.**
- **To impart education and training to students towards creating a better society with ethics and morals.**
- **To foster an interdisciplinary approach to education, research and innovation by supporting lifelong professional development, enriching knowledge banks through scientific research, promoting best practices and innovation, industry driven and institute oriented cooperation, globalization and international initiatives.**
- **To develop as a multi-dimensional institution contributing immensely to the cause of societal advancement through spread of literacy, an ambience that provides the best of international exposures, provide health care, enrich rural development and most importantly impart value based education.**
- **To establish benchmark standards in professional practice in the fields of innovative and emerging areas in engineering, management, medicine, dentistry, nursing, physiotherapy and allied sciences.**
- **To imbibe human dignity and values through personality development and social service activities.**

# STRATEGIC OBJECTIVES





# SIGNIFICANT ACCREDITATIONS & RANKINGS

14



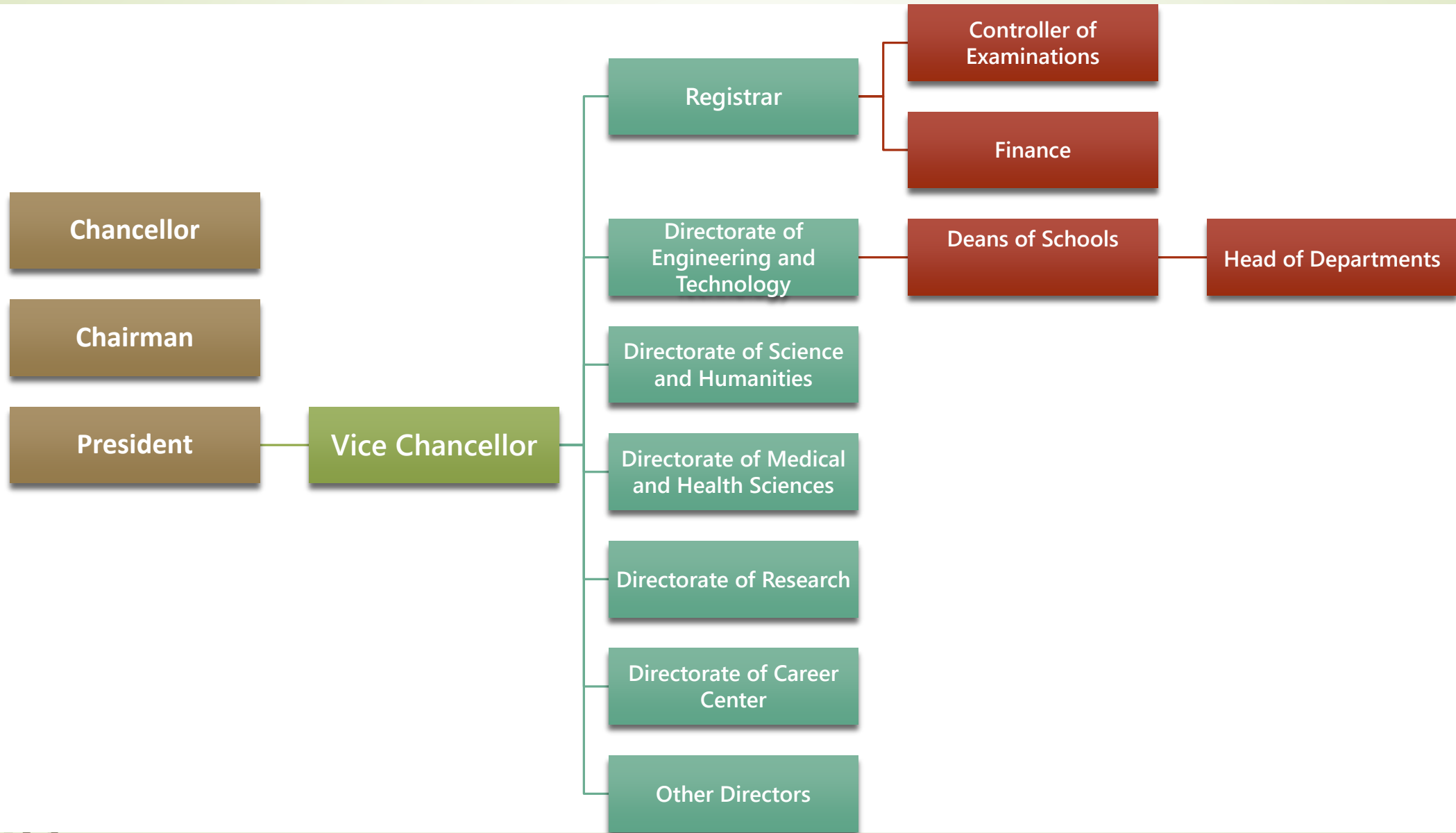
University - Ranked 59  
Overall - Ranked 87



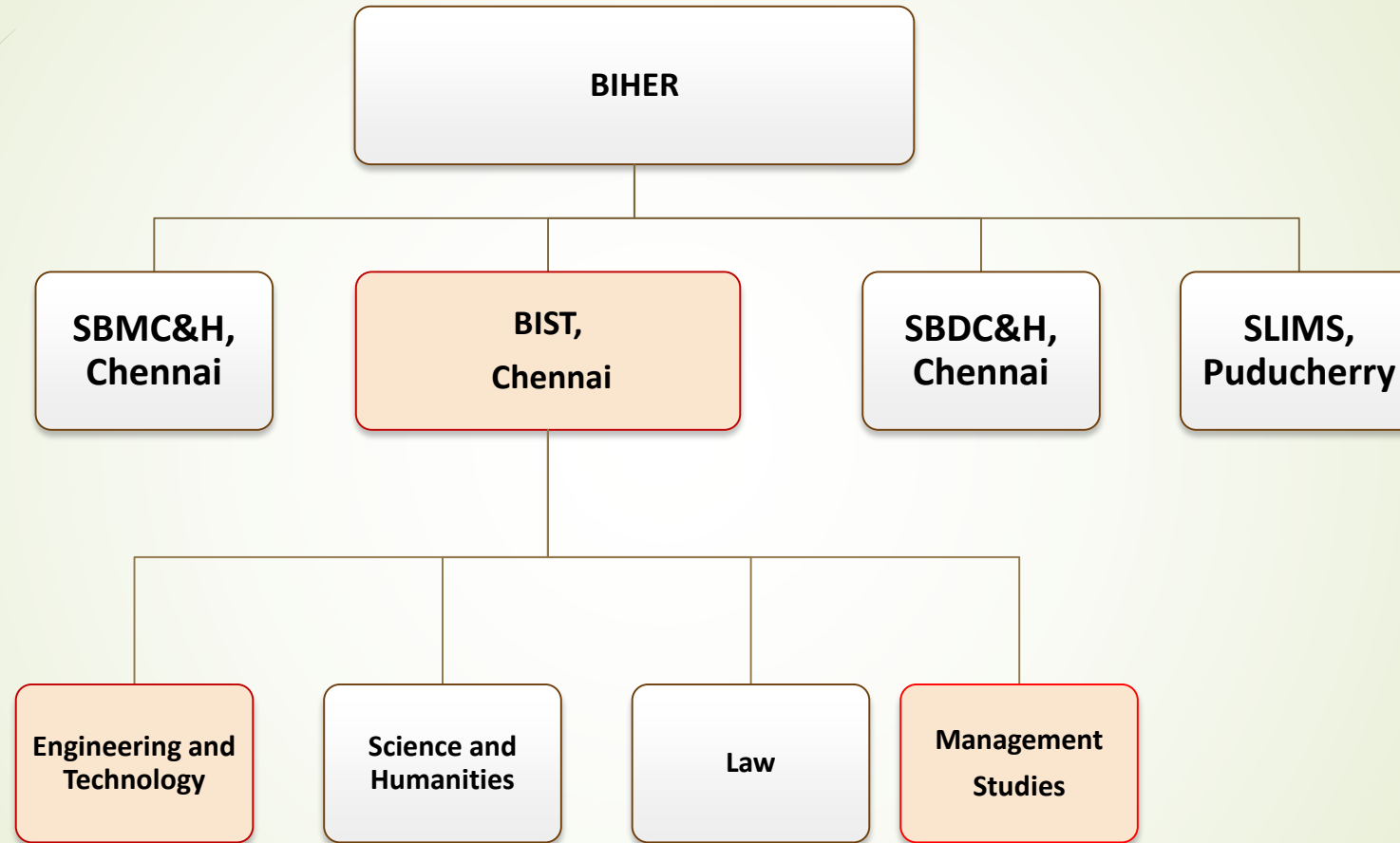
SCIMAGO  
INSTITUTIONS  
RANKINGS



# GOVERNANCE



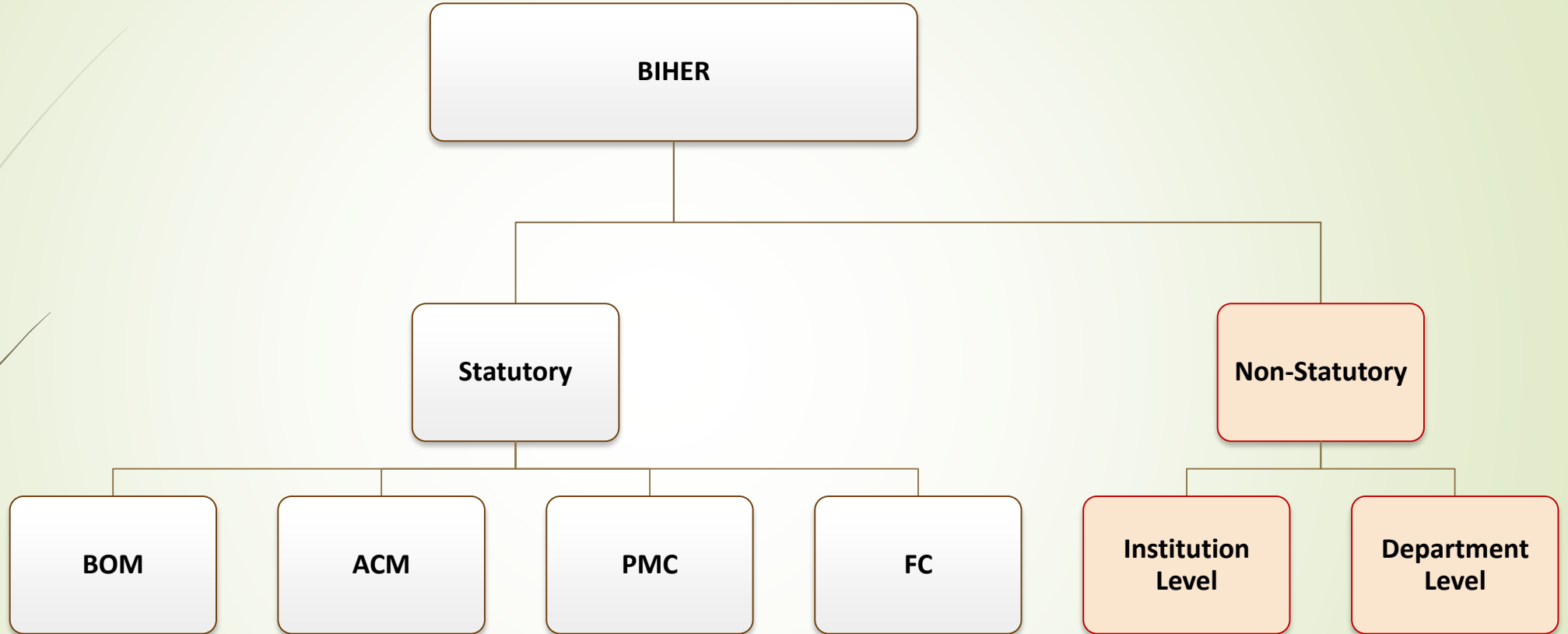
# CAMPUS & FACULTY



BIST – Bharath Institute of Science and Technology



# Administrative Committees



*BOM– Board of Management, ACM-Academic Council,  
PMC-Planning & Monitoring Committee, FC – Finance Committee*

# Institution-Level Committees

## Institution-level

Academic Audit Committee

Alumni Committee

Anti-Ragging Committee

Cultural Committee

Research Advisory Committee

Grievances - Redressal Committee

Women Empowerment Committee

Internal Complaints committee for Prevention of Sexual Harassment

Hostel & Canteen Committee

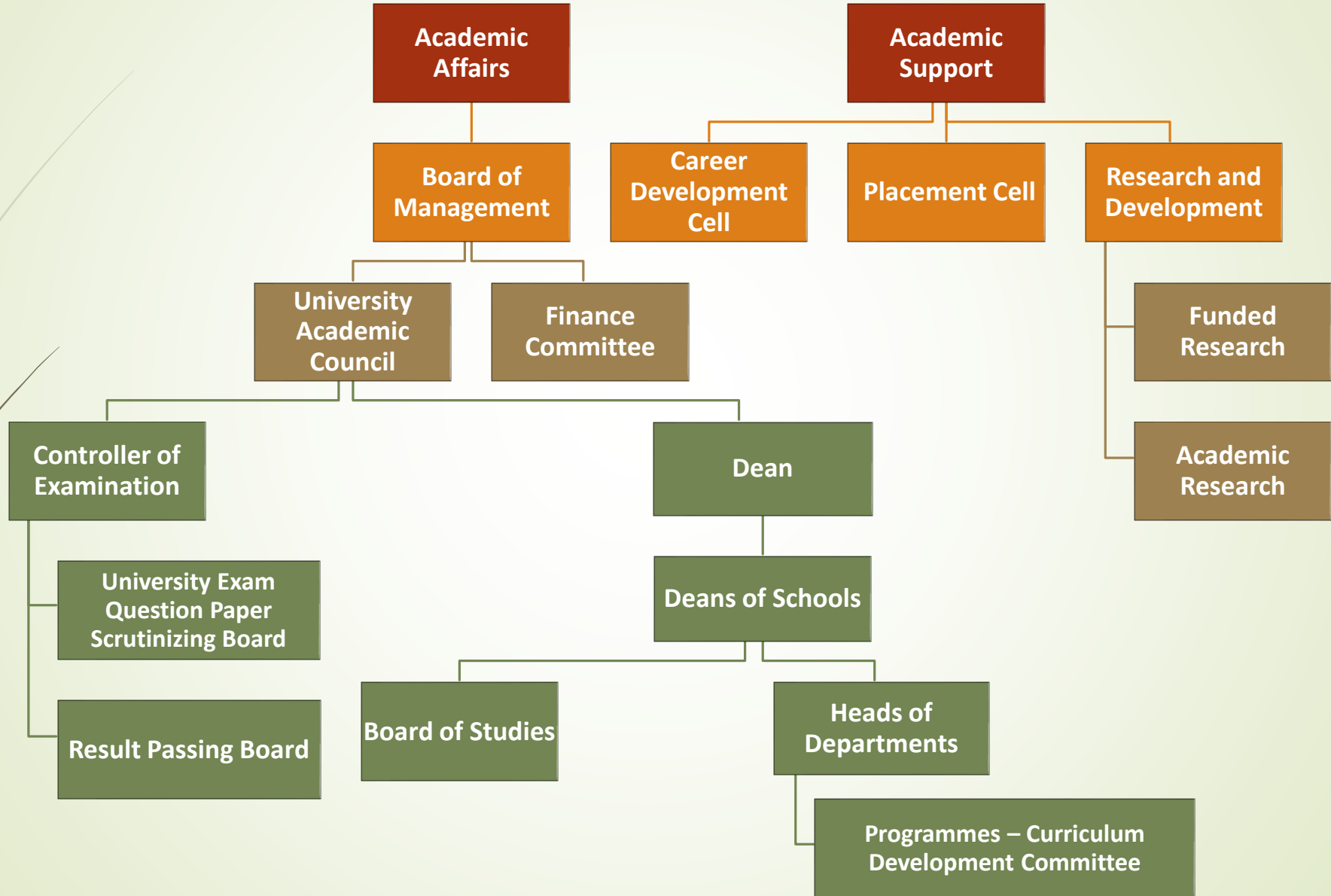
Purchase Committee

Sports Committee

transportation Committee

ITES Cell

# ACADEMIC STRUCTURE



# QUALITY ASSURANCE

QA Team	Frequency	Coverage	Action Plan	Track Feedback
Course Audit	Semester	<ol style="list-style-type: none"> <li>1.Course Objective and Outcomes Mapping</li> <li>2.Course Syllabus aligns to Course Objective and Industry Needs</li> <li>3.Assesment Questions and Moderation Procedures</li> <li>4.Student Performance and Outcome</li> </ol>	The feedback and suggestions are recorded, further discussed with the course committee the changes to be made are recorded	The inputs are placed in BOS for approval
BOS	Academic Year	<ol style="list-style-type: none"> <li>1. Curriculum aligns to Programme Learning Objectives</li> <li>2. Syllabus Mapping, Mode of Teaching</li> <li>3. Student outcomes and feedback</li> <li>4. New Content to be added is aligning to the objectives</li> <li>5.Any other Inputs through Course Audit and Class Committee</li> </ol>	The inputs about developing curriculum, syllabus coverage, other audit report are formulated	The inputs are placed in ACM for approval



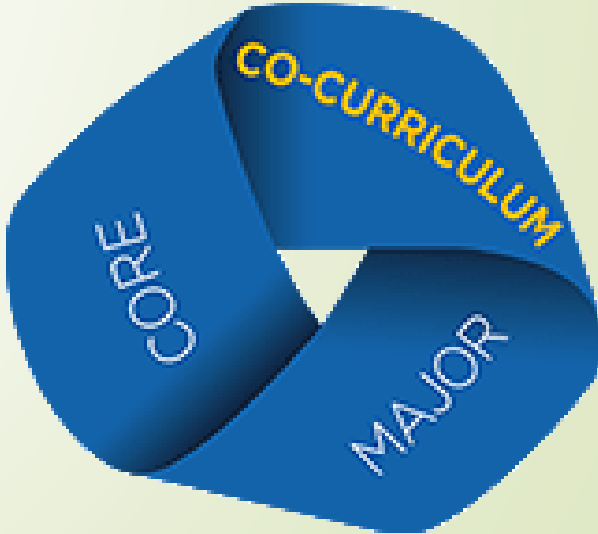
# QUALITY ASSURANCE

QA Team	Frequency	Coverage	Action Plan	Track Feedback
ACM	Academic Year	<ol style="list-style-type: none"> <li>1. Programmes and their Structures aligning to Department Philosophy</li> <li>2. Feasibility of adding courses and content and their alignment with Program Objectives</li> </ol>	<p>The inputs from BOS are verified</p> <p>Any New Changes are Formulated</p>	<p>The changes incorporated in curriculum and syllabus</p>
Academic Audit	Academic Year	<ol style="list-style-type: none"> <li>1. Faculty and Teaching Process</li> <li>2. Students based on the interaction</li> <li>3. Evaluation Process</li> <li>4. Quality of Question Papers</li> <li>5. Research Activities</li> <li>6. Infrastructure</li> <li>7. Events Organized</li> <li>8. Industry Collaboration</li> </ol>	<p>Presented to IQAC for further feedback</p>	<p>The immediate changes are incorporated as suggested</p>

# QUALITY ASSURANCE

QA Team	Frequency	Coverage	Action Plan	Track Feedback
External Examiners	Semester	Scrutinizing Question Papers based on the standards	The corrections are made in the question papers	The feedback is shared in the guidelines of the Question Paper Setting
External Project Examiners	Academic year	Major Project	Feedback of Projects Formulated	The suggestions are incorporated in further semesters

# ACADEMIC AND CURRICULAR ASPECTS



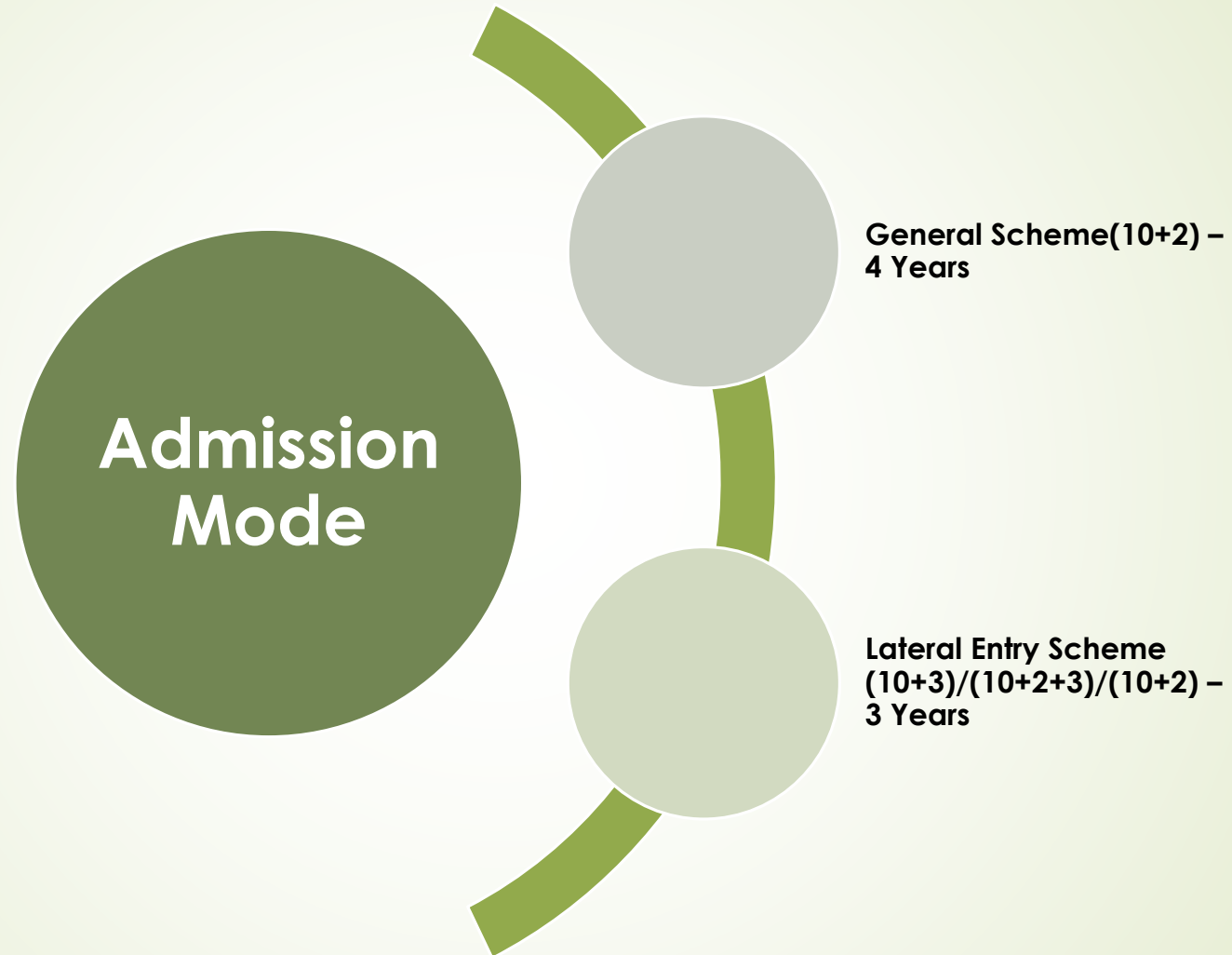
# PROGRAMS

## (Considered for Accreditation)

Departments	UG Programs	PG Programs
Department of Computer Science and Engineering	<b>B.Tech - Computer Science and Engineering</b>	M.Tech – Computer Science and Engineering
Department of Automobile Engineering	<b>B.Tech – Automobile Engineering</b>	M.Tech – Automobile Engineering
Department of Aeronautical Engineering	<b>B.Tech – Aeronautical Engineering</b> B.Tech – Aerospace Engineering	
Department of Management Studies		<b>MBA – Master of Business Administration</b>



# ADMISSION PROCESS – UG Engg



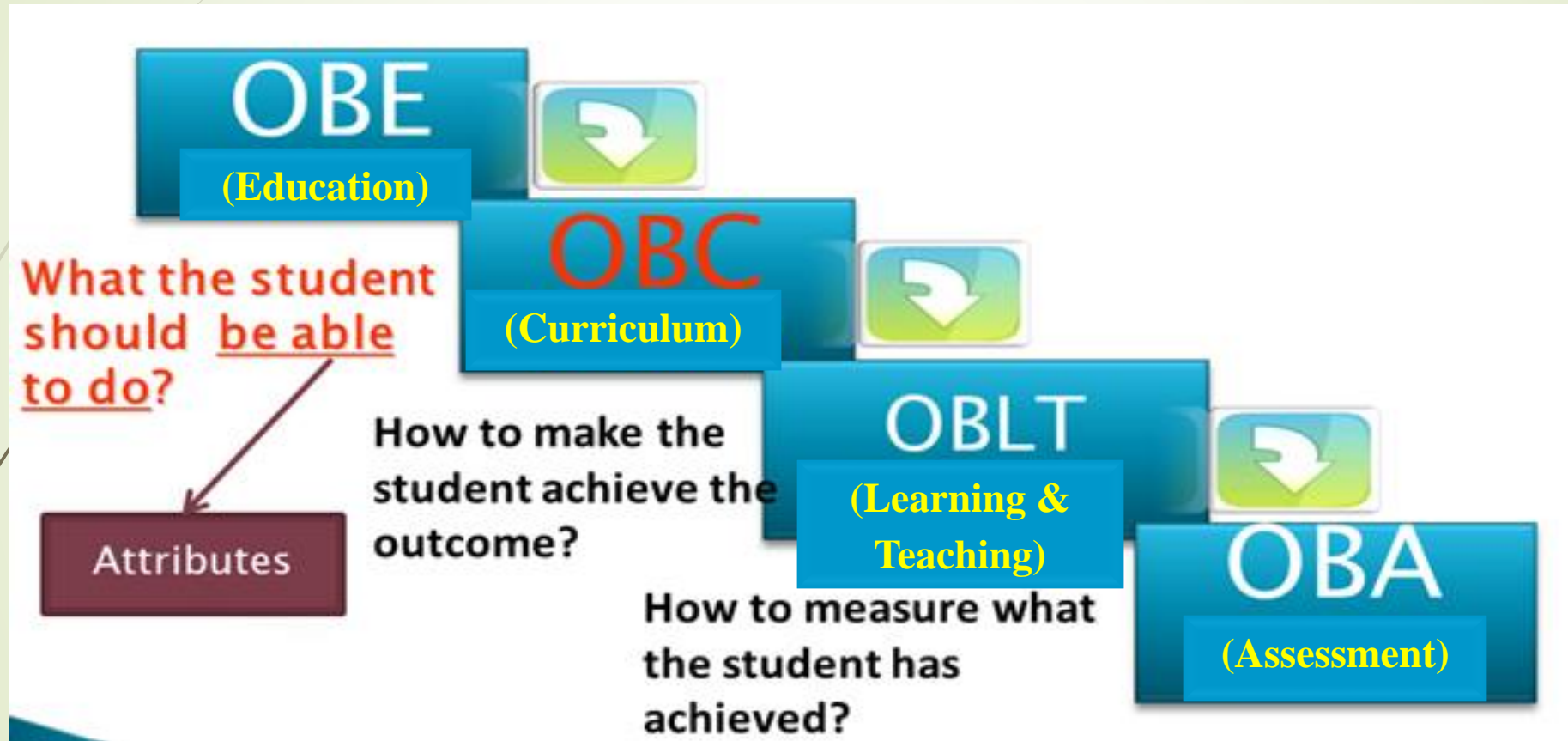
# ADMISSION PROCESS

- ◆ Eligibility based on marks in school level qualifying examination (Higher Secondary)
- ◆ National level Entrance Examination and Rank listing
  - ◆ 1,55,278 applicants for BEEE-2020
- ◆ Admission Counseling based on ranking
- ◆ Allocation of programs based on student preference during counseling
  - ◆ 1754 students(UG-Engg) admitted during 2020-21

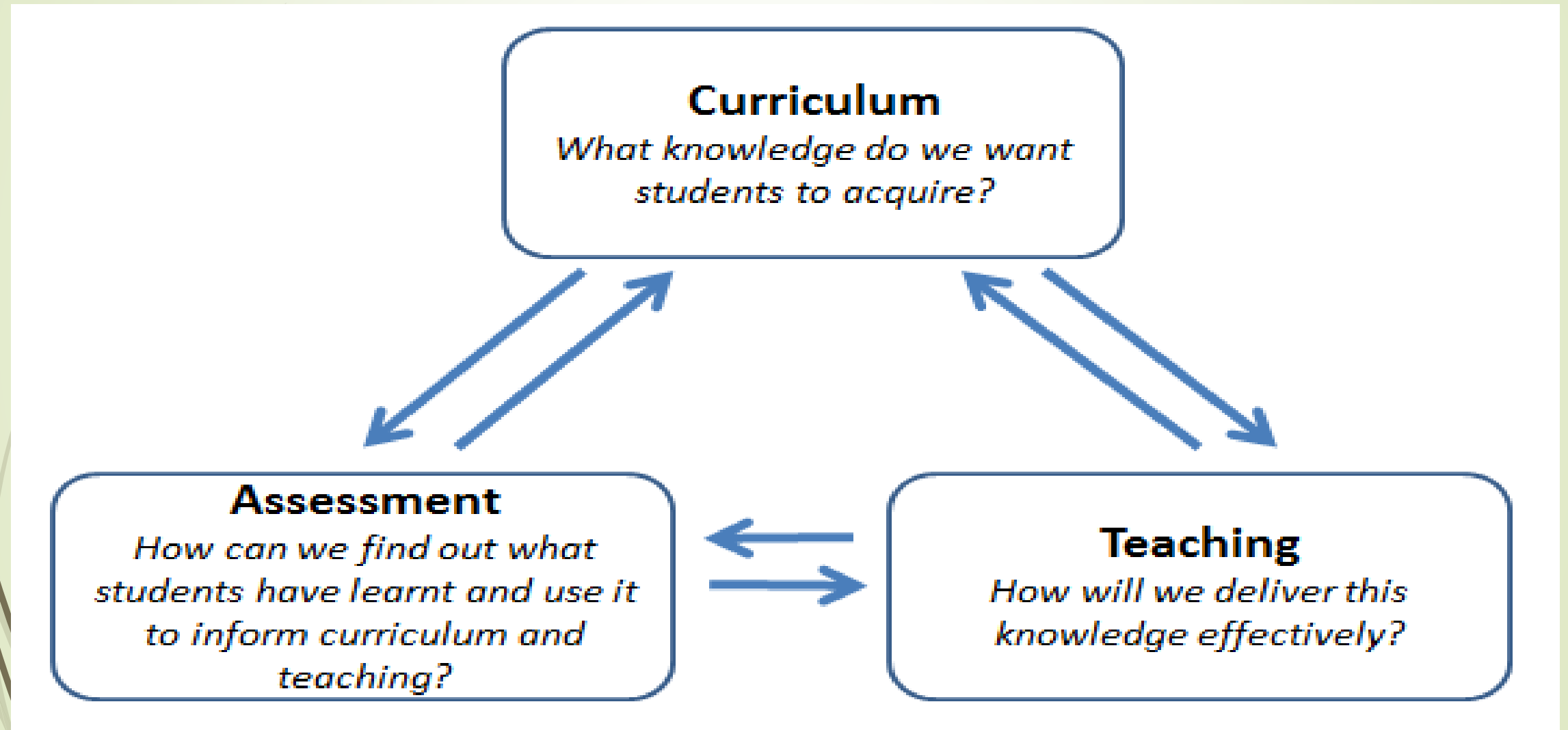
# PROGRAMS FOR ACCREDITATION & ENROLLMENT STATUS

	2020-21	2019-20	2018-19	2017-18
<b>B.Tech - CSE</b>	1128	1133	845	718
<b>B.Tech - Automobile</b>	50	41	55	36
<b>B.Tech - Aeronautical</b>	155	112	124	177
<b>MBA</b>	116	92	97	119

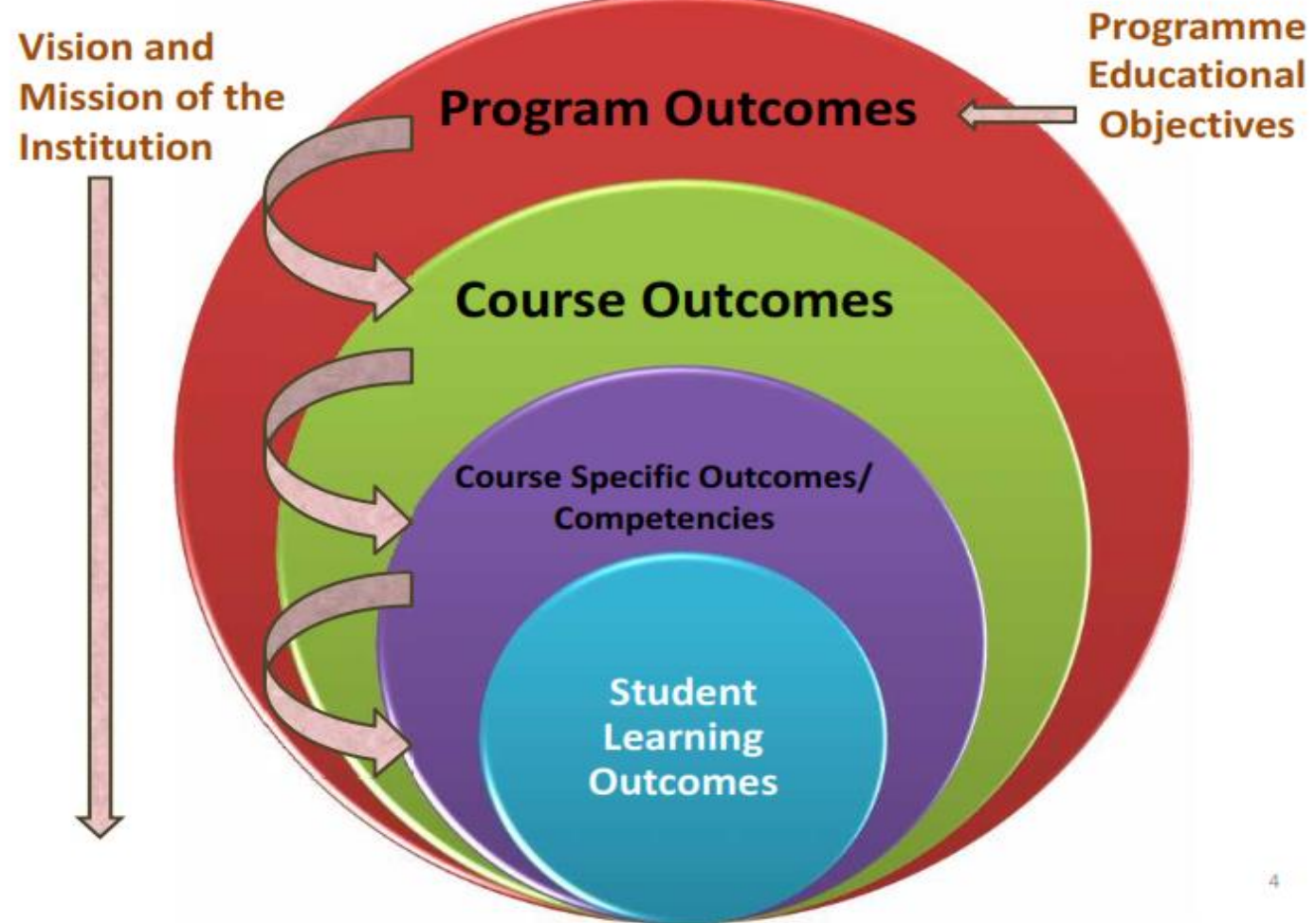
# OBE @ BIHER







# OBE @ BIHER



# Curricular Objectives and Outcomes



Department  
Vision & Mission

PEOs

POs & PSOs

COs

# PROGRAMS EDUCATIONAL OBJECTIVES

**PEO#1**

• **Preparation**

**PEO#2**

• **Core Competence**

**PEO#3**

• **Professionalism**

**PEO#4**

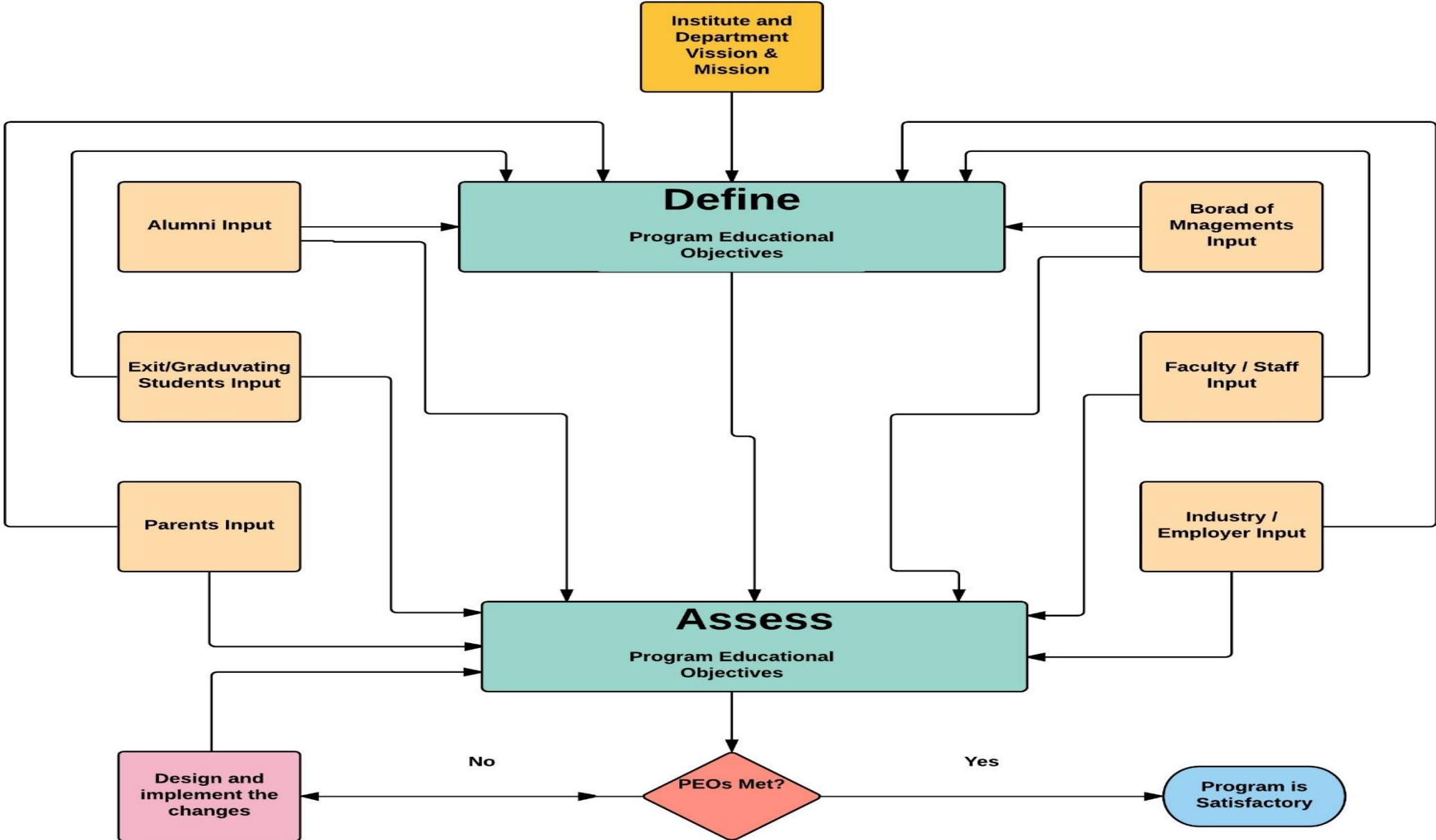
• **Skill & Proficiency**

**PEO#5**

• **Ethics**



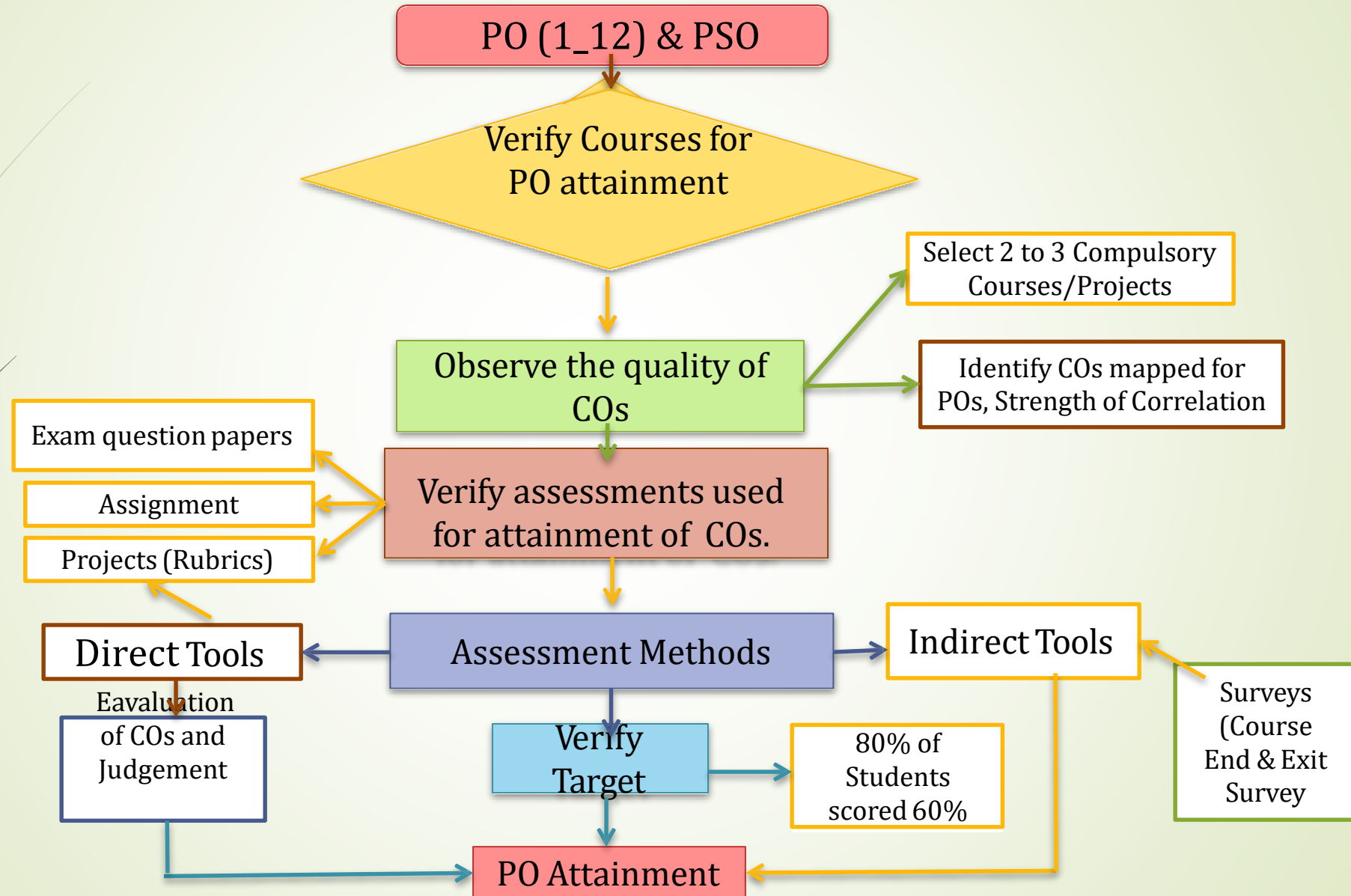
# PROGRAMS EDUCATIONAL OBJECTIVES



# PROGRAMS OBJECTIVES(PO)



# PO, PSO & CO – Attainment Chart



# CO Attainments

The CO attainment levels being measured based on the results of the internal assessment and external examination conducted by the University. In this direct measurements, two cycle test, two assignments, one model examination and one university examination conducted for each course in a semester. In each measurement, the percentage of students who achieve a set target (usually, 60% of maximum marks for theory tests and 80% of maximum marks for assignments) for the COs that are covered is computed. After the tests and assignments, the average of these percentage is computed to decide the attainment level. For example, the following example guidelines for arriving at an attainment level:

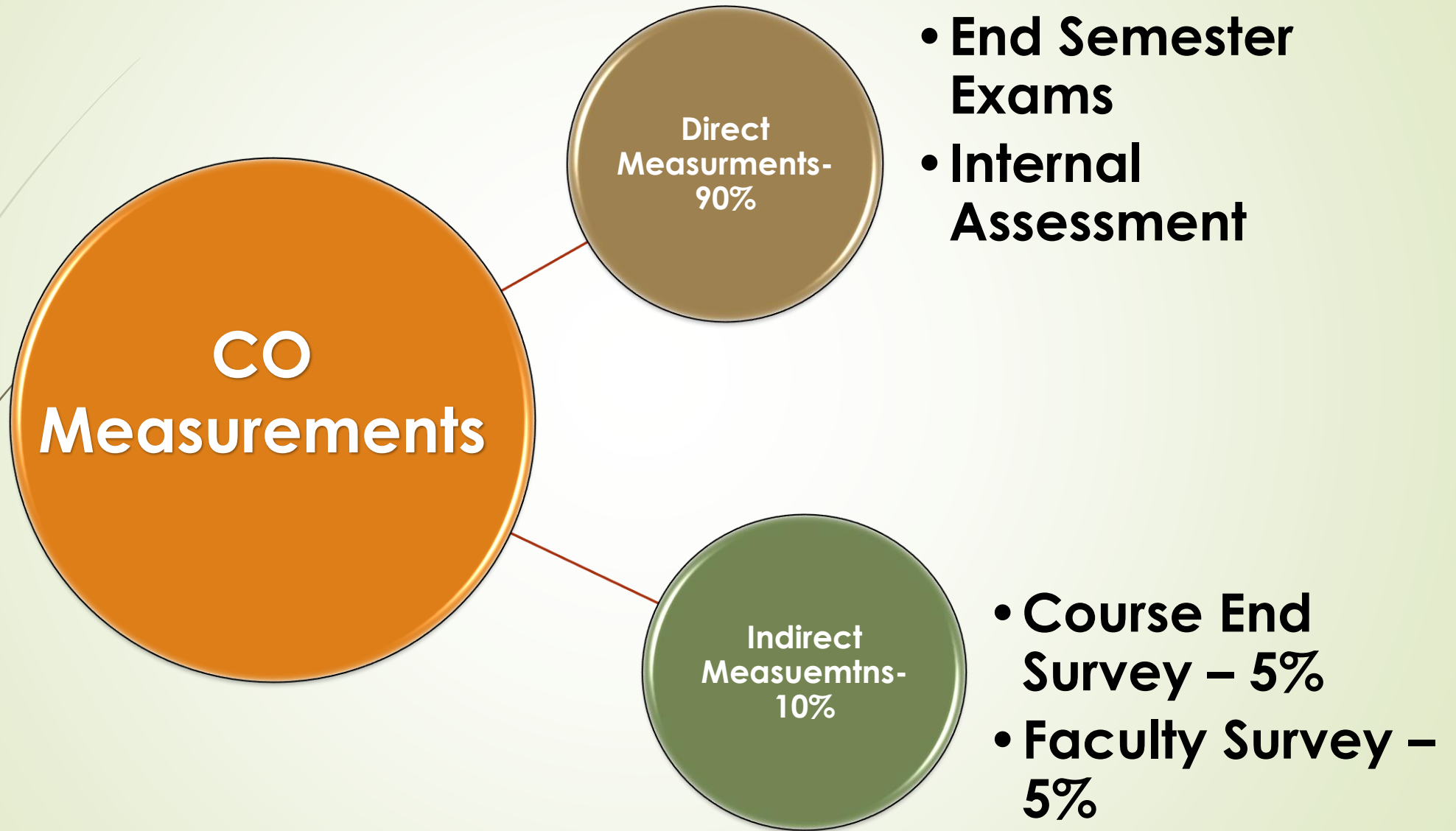
- *Attainment Level 1 : 60% of students score more than target level(60% - Written Test and 80% - Assignments)*
- *Attainment Level 2 : 70% of students score more than target level(60% - Written Test and 80% - Assignments)*
- *Attainment Level 3 : 80% of students score more than target level(60% - Written Test and 80% - Assignments)*

**Direct CO attainment=30% of Internal Assessments CO attainment level + 70% of University Exam CO attainment level**

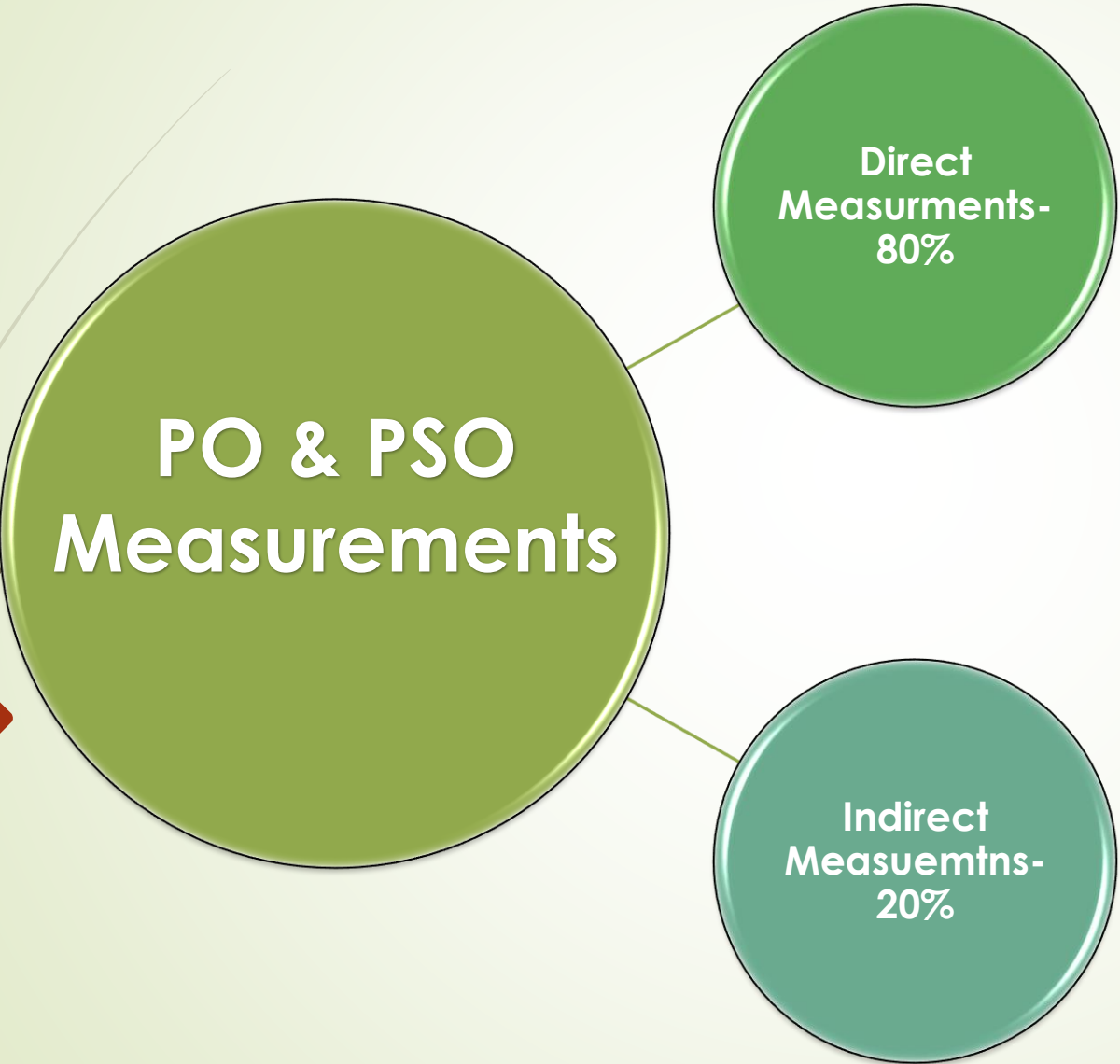
**Indirect CO Attainment=**



# CO attainment Rubrics

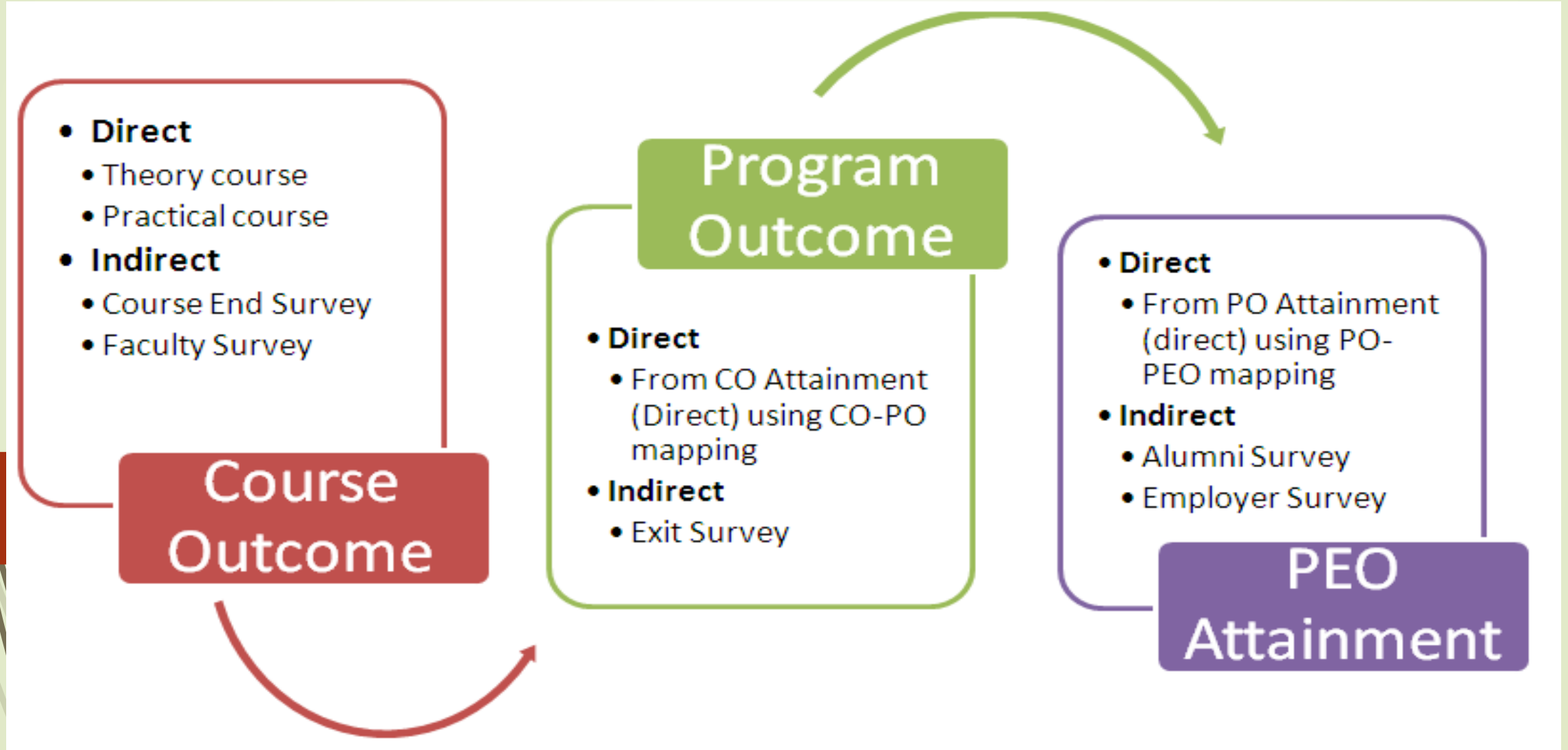


# PO & PSO attainment Rubrics




- **Exit Students Survey – 10%**
- **Course End Survey – 5%**
- **Faculty Survey – 5%**

# OUTCOMES ATTAINMENTS PROCESS



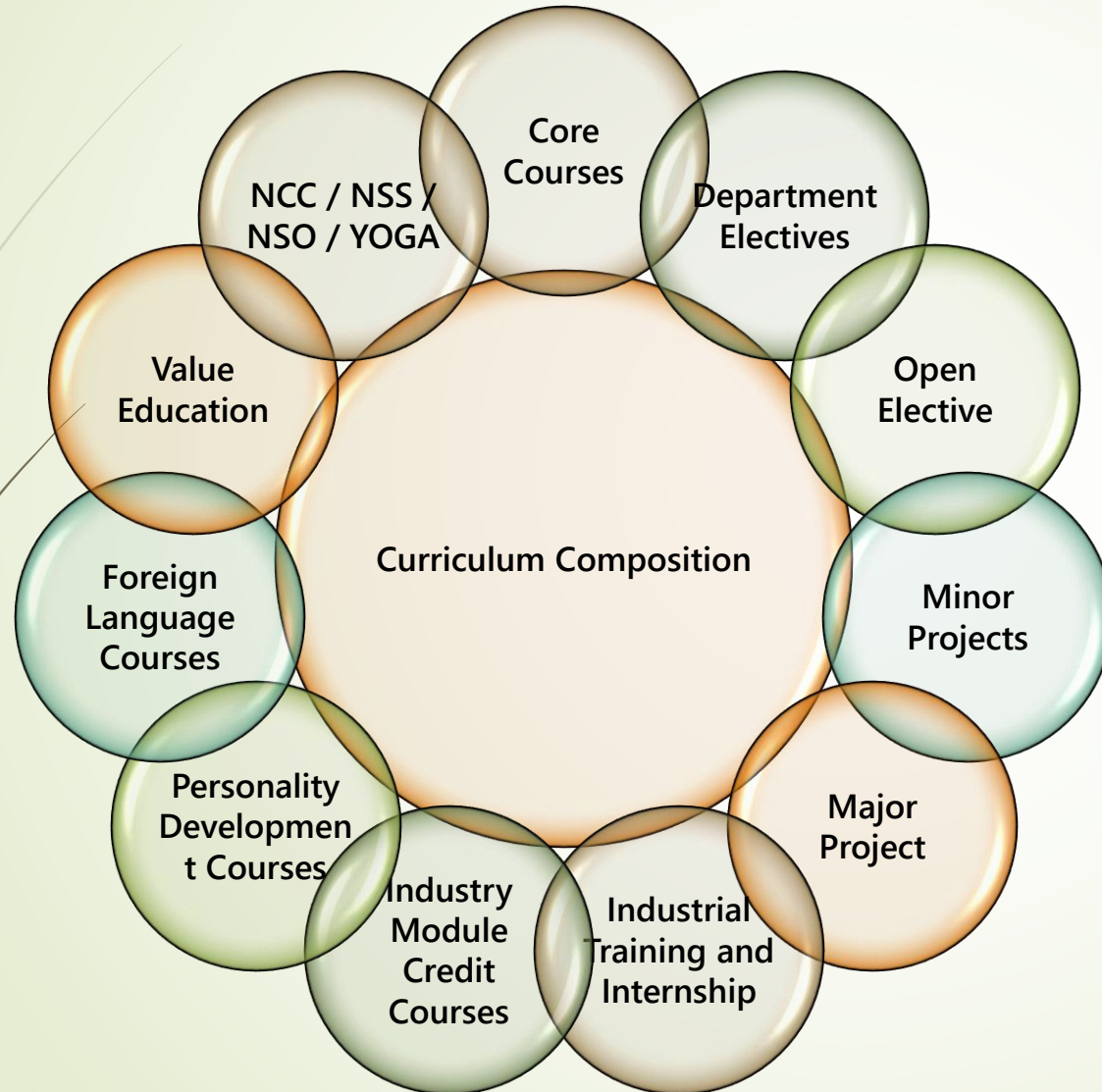
# **CURRICULUM DESIGN**

## **(Objectives of Choice Based Credit System-CBCS)**

- More Academic Flexibility in the form of more Electives
  - Multi disciplinary Curriculum to students based on their ability and Interest
  - Students can enable to progress at their own pace
  - Development of depth knowledge in selected area
  - Students can get training in a specific skills, to equip for the job market
- 



# CURRICULUM DESIGN



## Type of Courses

Theory

Practical

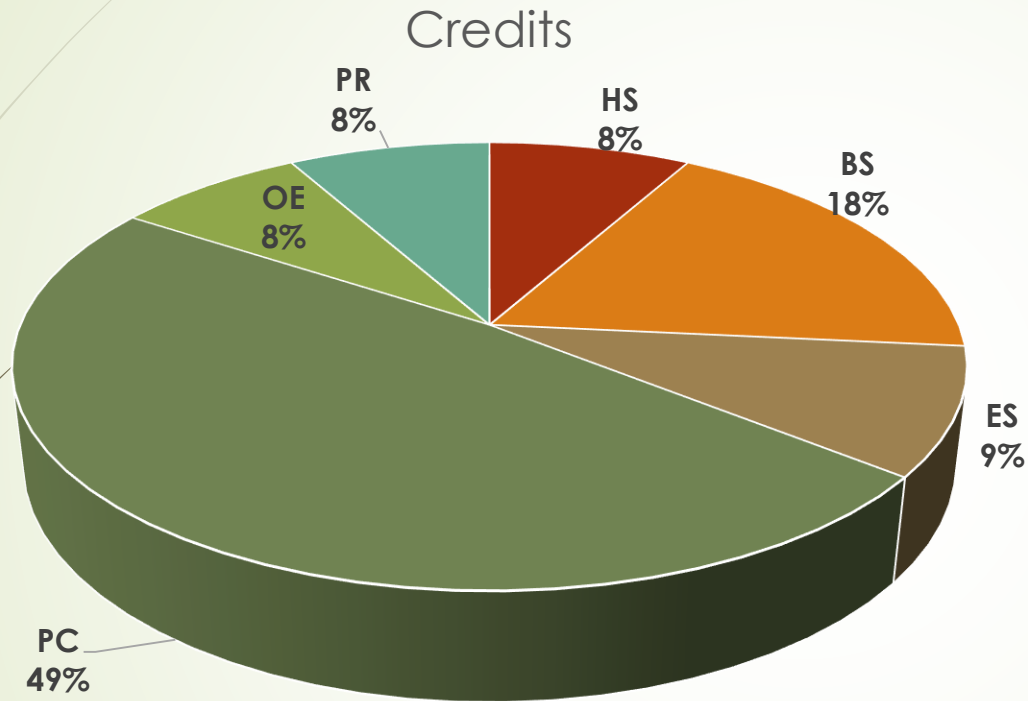
Theory with Practical  
(Joint)

Project

Industrial Training

Seminar

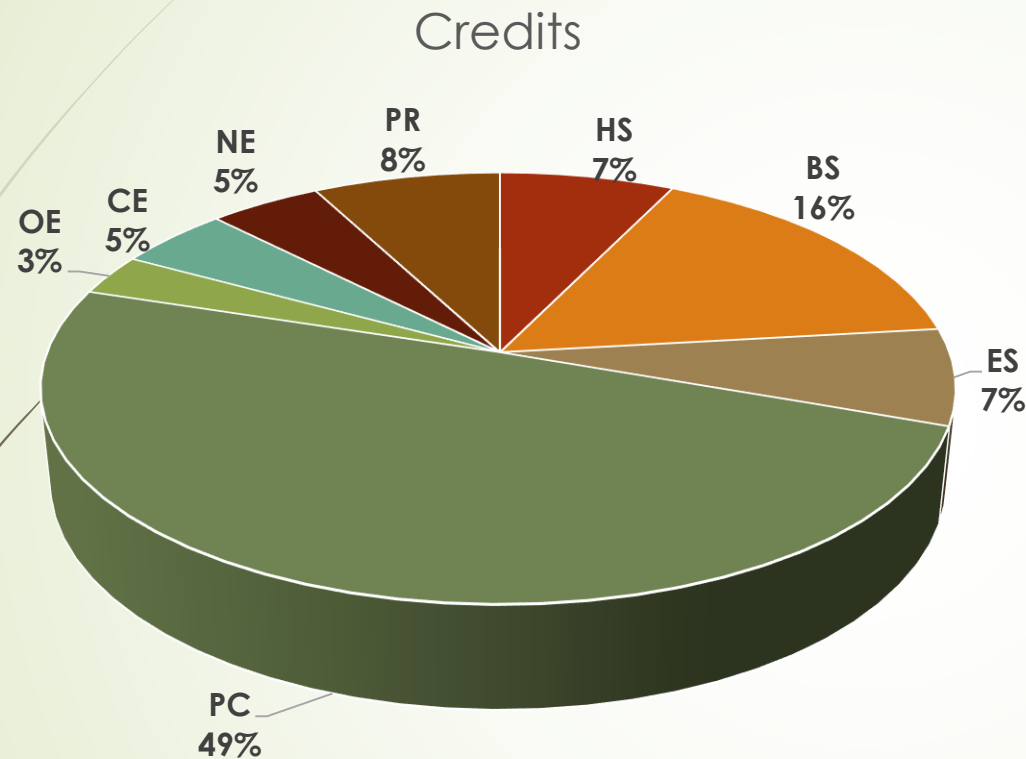
# CURRICULUM DESIGN – B.Tech – R2015-CSE



Subject Area	No. of Credits
HS	16
BS	36
ES	18
PC	95
OE	15
PR	16
<b>Total</b>	<b>196</b>

HS-Humanities & Social Science, BS-Basic Sciences, ES-Engineering Sciences, PC-Professional Core, OE-Open Electives, PR-Project Works

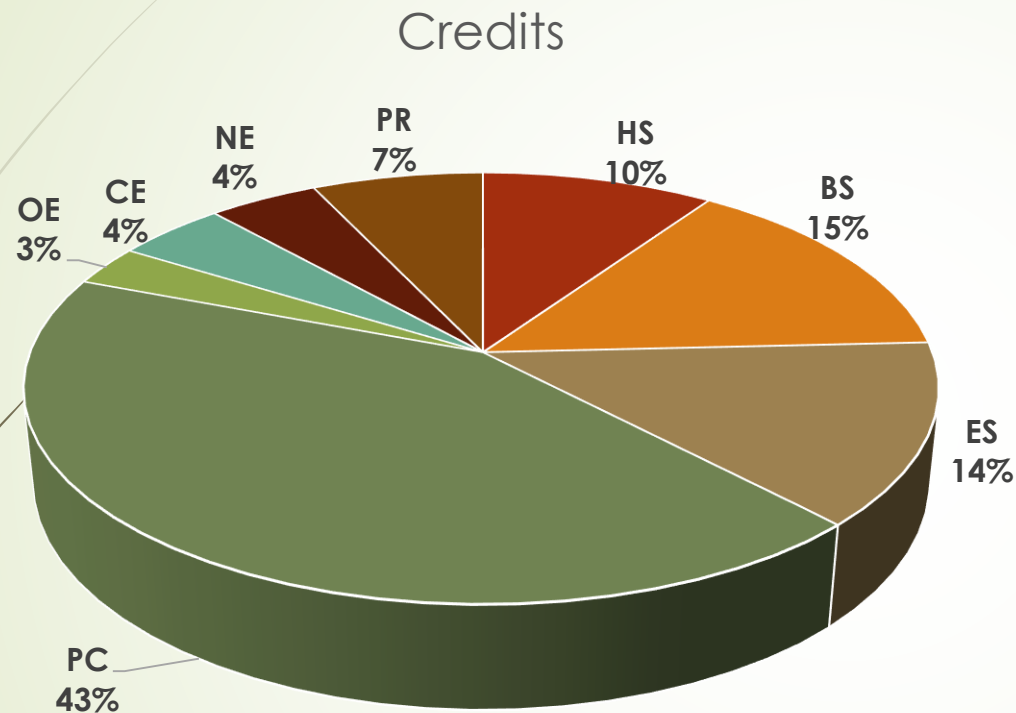
# CURRICULUM DESIGN – B.Tech – R2015-Auto



Subject Area	No. of Credits
HS	14
BS	31
ES	14
PC	96
OE	6
CE	9
NE	9
PR	15
<b>Total</b>	<b>194</b>

HS-Humanities & Social Science, BS-Basic Sciences, ES-Engineering Sciences, PC-Professional Core, CE-Core Elective, NE-Non Major Electives, OE-Open Electives, PR-Project Works

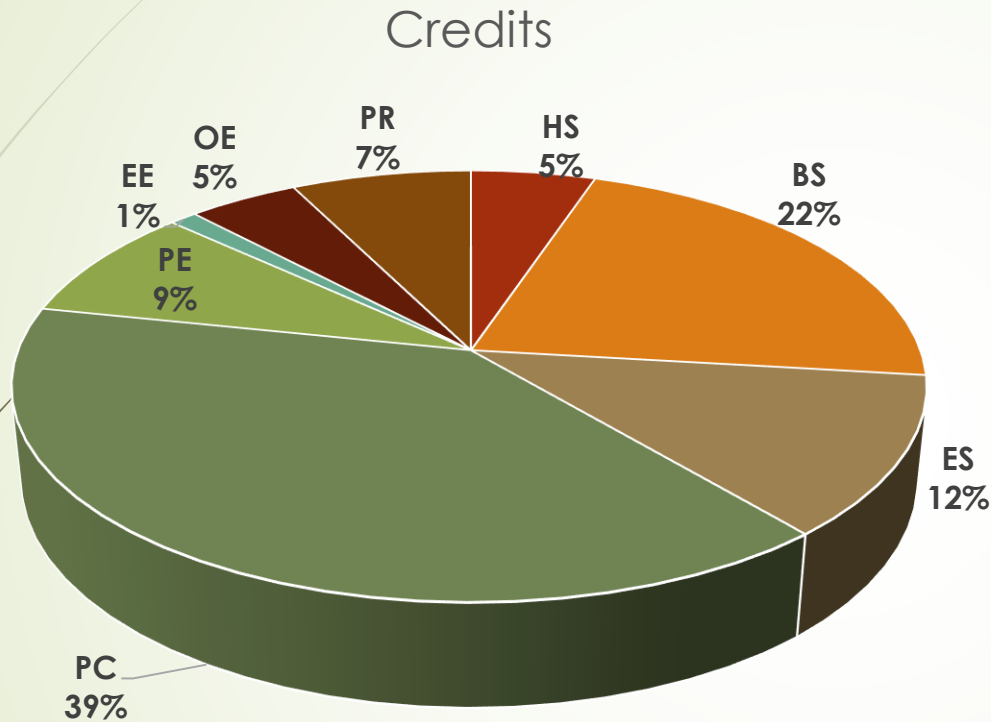
# CURRICULUM DESIGN – B.Tech – R2015-Aero



Subject Area	No. of Credits
HS	19
BS	29
ES	27
PC	85
OE	6
CE	9
NE	9
PR	14
<b>Total</b>	<b>198</b>

HS-Humanities & Social Science, BS-Basic Sciences, ES-Engineering Sciences, PC-Professional Core, CE-Core Elective, NE-Non Major Electives, OE-Open Electives, PR-Project Works

# CURRICULUM DESIGN – B.Tech – R2018-CSE

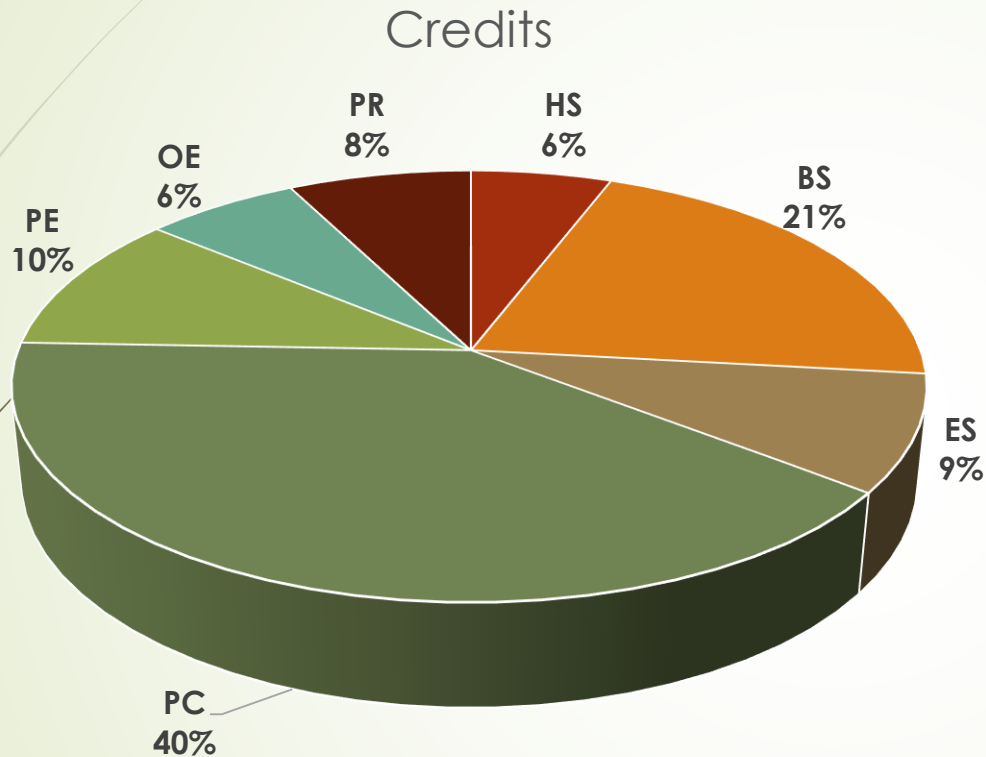


Subject Area	No. of Credits
HS	9
BS	38
ES	21
PC	69
PE	15
EE	2
OE	8
PR	13
<b>Total</b>	<b>175</b>

HS-Humanities & Social Science, BS-Basic Sciences, ES-Engineering Sciences, PC-Professional Core, PE-Professional Elective, EE-Engineering Electives, OE-Open Electives, PR-Project Works



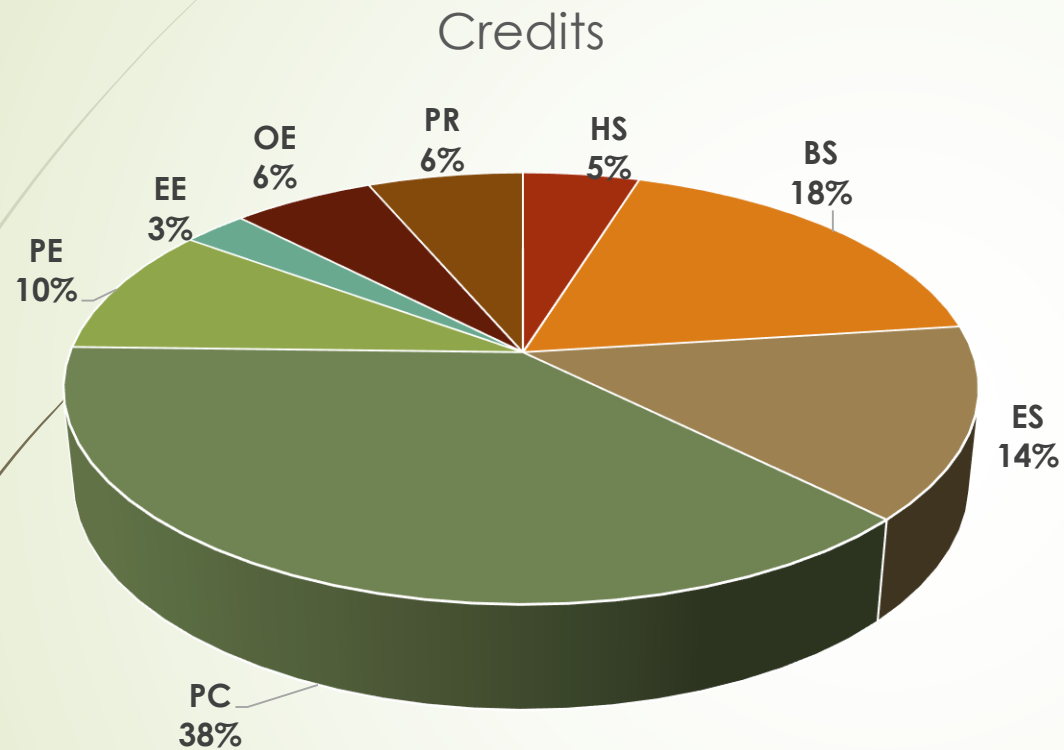
# CURRICULUM DESIGN – B.Tech – R2018-Auto



Subject Area	No. of Credits
HS	10
BS	36
ES	15
PC	69
PE	18
OE	11
PR	13
<b>Total</b>	<b>172</b>

**HS-Humanities & Social Science, BS-Basic Sciences, ES-Engineering Sciences, PC-Professional Core, PE-Professional Elective, EE-Engineering Electives, OE-Open Electives, PR-Project Works**

# CURRICULUM DESIGN – B.Tech – R2018-Aero

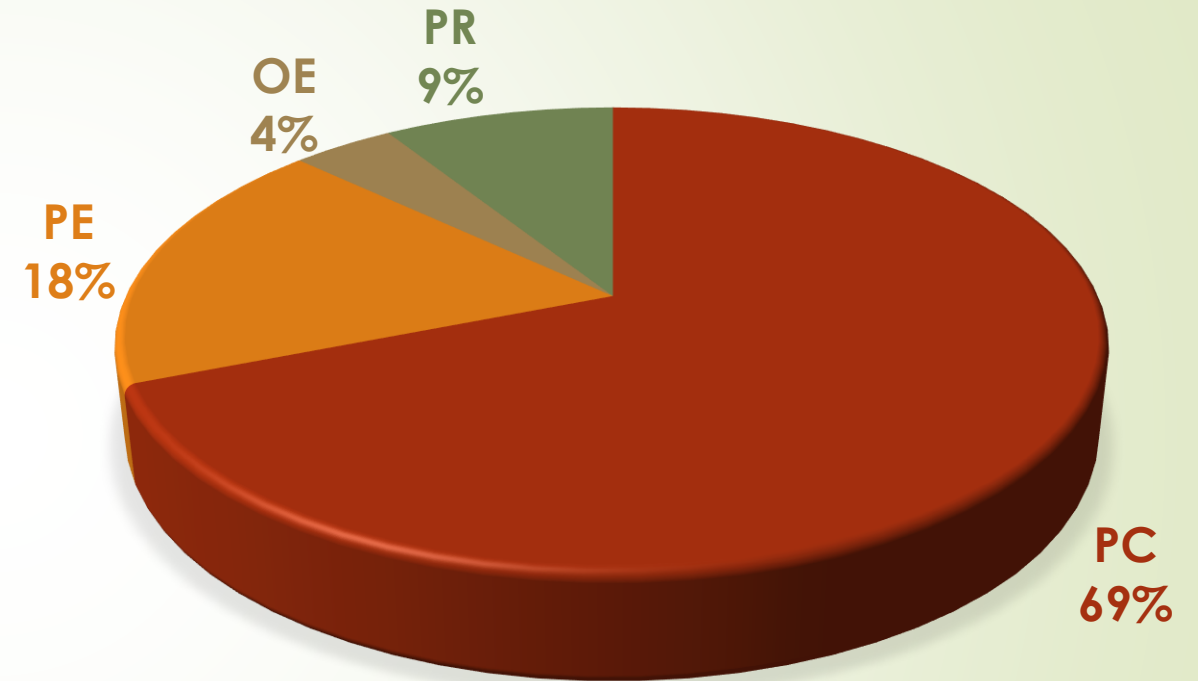


Subject Area	No. of Credits
HS	9
BS	34
ES	27
PC	71
PE	18
OE	11
EE	5
PR	12
<b>Total</b>	<b>187</b>

HS-Humanities & Social Science, BS-Basic Sciences, ES-Engineering Sciences, PC-Professional Core, PE-Professional Elective, EE- Employability Enchanment , OE-Open Electives, PR-Project Works

# CURRICULUM DESIGN – MBA – R2018

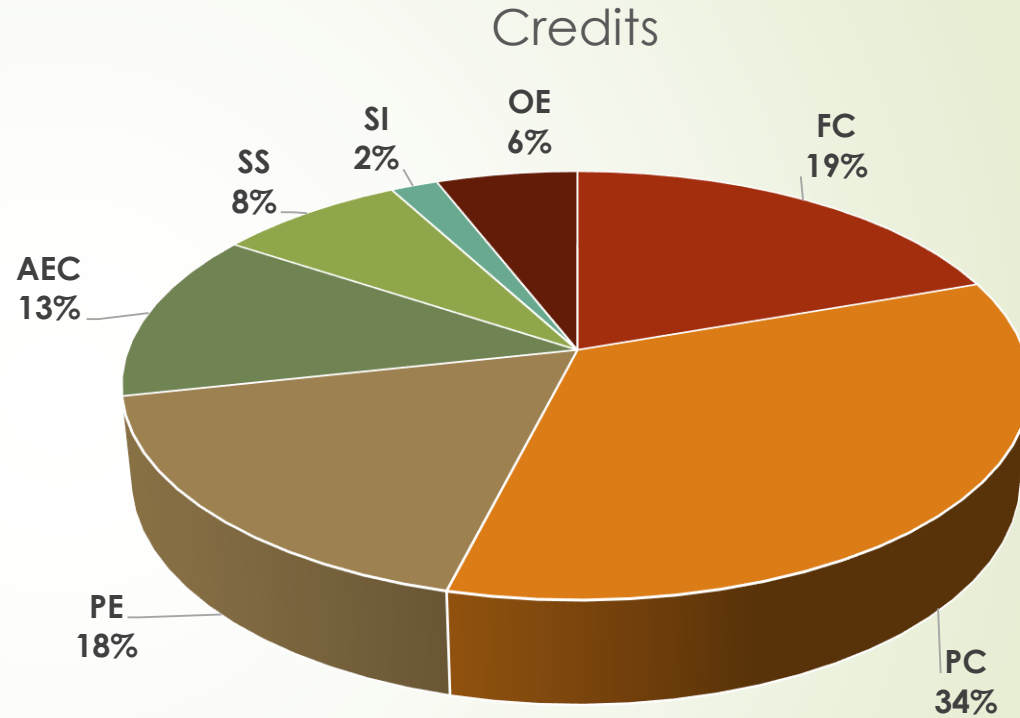
Subject Area	No. of Credits
PC	69
PE	18
OE	4
PR	9
<b>Total</b>	<b>100</b>



PC-Professional Core, PE-Programme Elective,  
OE-Open Electives, PR-Project Works

# CURRICULUM DESIGN – MBA – R2020

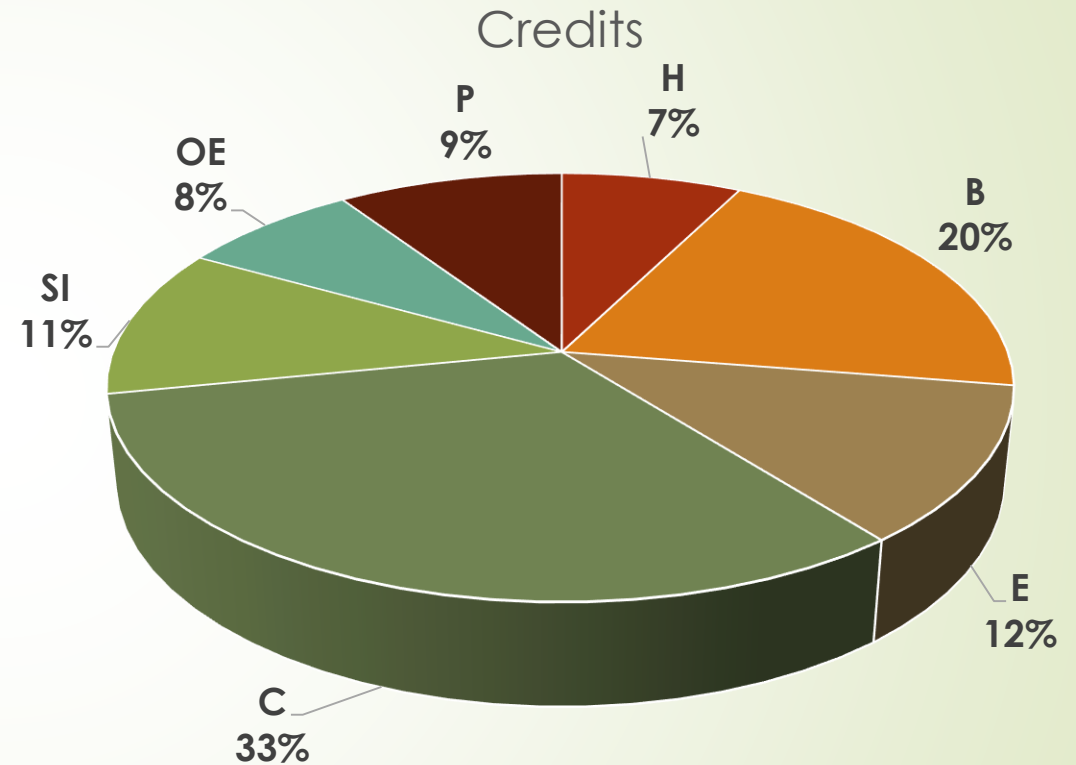
Subject Area	No. of Credits
FC	20
PC	35
PE	18
AEC	13
SS	8
SI	2
OE	6
<b>Total</b>	<b>102</b>



FC-Foundation Courses, PC-Professional Core, PE-Professional Electives  
AEC-Ability Enhancement Courses, SS-Soft Skills, SI – Internship, OE-Open Electives

# CURRICULUM DESIGN – UG(Engg.) – R2020

Subject Area	No. of Credits
H	12
B	32
E	19
C	52
S	18
O	12
P	15
M	0
<b>Total</b>	<b>160</b>

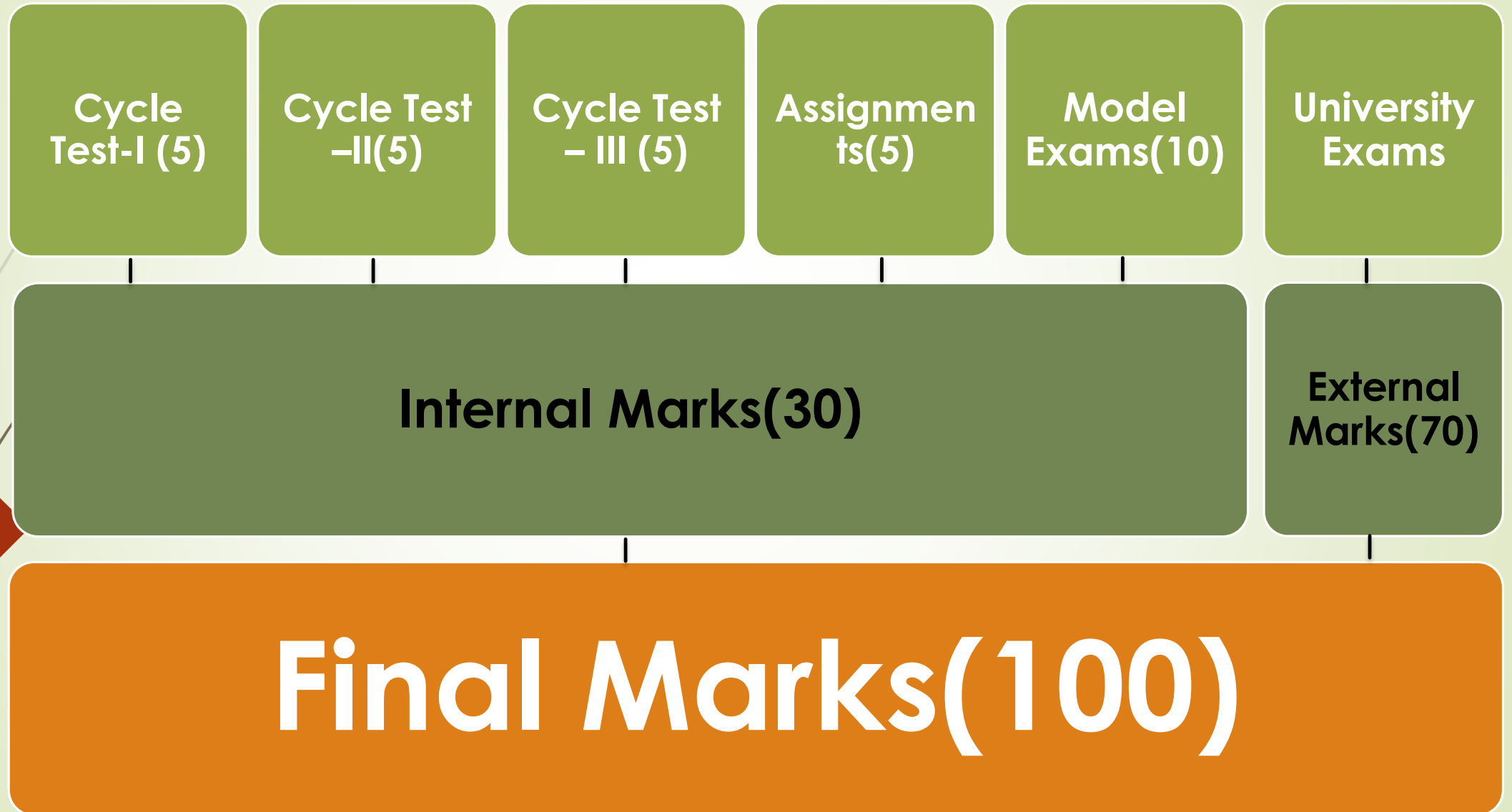


H- Humanities, B- Basic Sciences, E-Engineering Sciences, C-Professional Core, S-Programme Specific Course, O-Open Electives, P-Project and Internship, M-Mandatory courses



# Rubrics of Evaluations System

## (Theory Subjects – R2015)



# Rubrics of Evaluations System

## (Theory Subjects – R2018)

Cycle Test-I (5)

Cycle Test-II (5)

Cycle Test-III (5)

Assignments (10)

Model Exams (15)

University Exams

Internal Marks (40)

External Marks (60)

**Final Marks (100)**

# Rubrics of Evaluations System (Practical Subjects-R2015)

Observation-  
7.50

Record – 7.5

Viva Voce -  
5

Model  
Practical  
- 20

University  
Exams

Internal Marks(40)

External  
Marks(60)

**Final Marks(100)**

# Rubrics of Evaluations System (Practical Subjects-R2018)

Observation-  
10

Record – 10

Viva Voce -  
10

Model  
Practical  
- 20

University  
Exams

Internal Marks(50)

External  
Marks(50)

Final Marks(100)

# **Rules of Pre-requisite and Co-requisite Courses**

## **Pre-requisite courses:**

**Prerequisites are courses that must be taken up prior to advancing to the next course in a prescribed sequence of courses. The prerequisite courses have to be registered by the student, earned a minimum of 75% attendance and must appeared in the end semester Examination prior to advancing to the next course in a prescribed sequence of courses.**

## **Co-requisites courses:**

**Co requisites are courses that must be taken at the same time as, or passed prior to, the designated course.**



# Rubrics of Evaluations System

(Capstone Courses-Projects-R2015)

<b>Continuous Assessment 40 Marks</b>			
<b>Review I (20 Marks)</b>		<b>Review II (20 Marks)</b>	
<b>Review Committee</b>	<b>Guide</b>	<b>Review Committee</b>	<b>Guide</b>
<b>14</b>	<b>6</b>	<b>14</b>	<b>6</b>

<b>End Semester Examination 60 Marks</b>		
<b>Report Evaluation</b>	<b>Viva – Voce</b>	
<b>External Examiner</b>	<b>External Examiner</b>	<b>Internal Examiner</b>
<b>20</b>	<b>20</b>	<b>20</b>

# Rubrics of Evaluations System

## (Capstone Courses-Projects-R2018)

<b>Continuous Assessment 50 Marks</b>			
<b>Review I (25 Marks)</b>		<b>Review II (25 Marks)</b>	
<b>Review Committee</b>	<b>Guide</b>	<b>Review Committee</b>	<b>Guide</b>
<b>20</b>	<b>5</b>	<b>20</b>	<b>5</b>

<b>End Semester Examination 50 Marks</b>		
<b>Report Evaluation</b>	<b>Viva – Voce</b>	
<b>External Examiner</b>	<b>External Examiner</b>	<b>Internal Examiner</b>
<b>20</b>	<b>20</b>	<b>10</b>

# **Project Assessment Rubrics**

## **(Institution-wide)**

**Goal:** Formulate and compete a project that addresses a combination of social, humanities, and technical issues

### **Course Outcomes:**

- 1. Demonstrate an understanding of the project's technical, social and humanistic context**
- 2. Define clear, achievable goals and objectives for the project.**
- 3. Select and implement a sound approach to solving an interdisciplinary problem**
- 4. Analyze and synthesize results from social, humanistic, technical or other perspectives, as appropriate**

# **Rubrics of Evaluations System**

## **(Capstone Courses-Seminars)**

### **Continuous Assessment 100 Marks**

<b>Seminar- I (50 Marks)</b>			<b>Seminar -II (50 Marks)</b>		
<b>Seminar Paper/Report</b>	<b>Presentation</b>	<b>Questioning</b>	<b>Seminar Paper/Report</b>	<b>Presentation</b>	<b>Questioning</b>
<b>20</b>	<b>20</b>	<b>10</b>	<b>20</b>	<b>20</b>	<b>10</b>

# Rubrics of Evaluations System

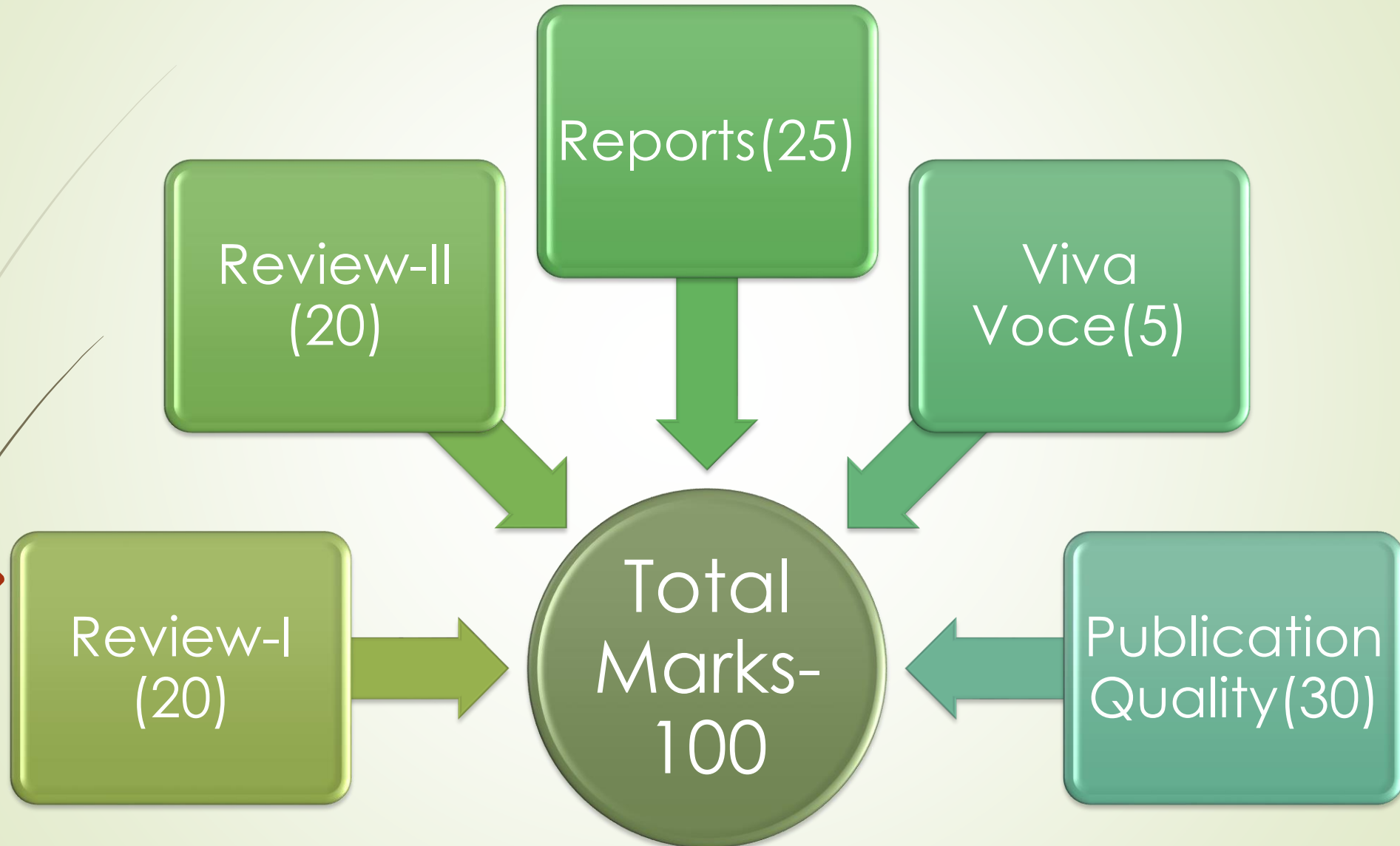
(End Semester Exams-R2015 & R2018)

Syllabus Coverage	Duration of the Exam in Hours	Question Pattern
<b>Full Syllabus</b>	<b>3</b>	<p><u>Part – A, 10x2 = 20</u> Short answer Type, 10 questions each carrying 2 marks. 2 questions from each unit.</p> <p><u>Part – B, 5x6 = 30</u> Para /Analytical Type, 5 questions, one from each unit EITHER - OR type.</p> <p><u>Part – C, 5x10 = 50</u> Essay/Design/Analytical Type</p> <p>Max mark = 100</p>




# Rubrics of Evaluations System

## (Capstone Courses-Term Papers)



## **Challenge of Evaluation**

**If one is not satisfied with the result, can make an appeal to the Controller of Exams for the review of answer scripts after paying the prescribed fee within 7 days after the declaration of the examination result.**



# Grading System-R2015

Mark Range	Grade	Points	Results
90-100	S	10	PASS
80-89	A	9	PASS
70-79	B	8	PASS
60-69	C	7	PASS
55-59	D	6	PASS
50-54	E	5	PASS
0-49	U	-	REAPPEAR
W	W	-	WITHDRAWN
I	I	-	INCOMPLETE

$$GPA = \frac{\sum_i (C_i GP_i)}{\sum_i C_i}$$

# Grading System-R2018

Mark Range	Grade	Points	Results
91-100	O	10	Outstanding
81-90	A+	9	Excellent
71-80	A	8	Very Good
61-70	B+	7	Good
50-60	B	6	Average
<50	RA	5	Re-Appeal
-	SA	-	Shortage of Attendance
-	W	-	WITHDRAWN
-	AB	-	Absent

$$GPA = \frac{\sum_i (C_i GP_i)}{\sum_i C_i}$$

# EVALUATION & ASSESSMENT OF PERFORMANCE

- Continuous Assessment and Transparent evaluation
- External examiners for Project assessments
- Result passing board to overall monitoring of results / grades
- Mechanism to Review answer scripts by students
- Course wise result analysis
- Cumulative Grade Points Average (CGPA) on a 10 point scale
- Online announcement of Results
- Academic Performance update to Parents



## **ELIGIBILITY FOR THE AWARD OF THE DEGREE**

**A student shall be declared to be eligible for the award of the B.Tech Degree provided the student has**

- Successfully completed the course requirement and has passed all the prescribed examinations in all the 8 semesters (6 semesters for lateral entry and Bridge courses) within a maximum period of 7 years (6 years for lateral entry) reckoned from the commencement of the first semester to which the candidate was admitted.**
- No disciplinary action is pending against him/her.**
- The award of the degree must be approved by the Board of Management of the University.**

# CLASSIFICATION OF THE DEGREE AWARDED

## First class with distinction

- A candidate who qualifies for the award of the degree having passed examination in all the courses of all the eight semesters (six semesters in the case of lateral entry) in his/her First Appearance within eight consecutive semesters (six for lateral entry) securing a CGPA of not less than 8.0

## First Class

- A candidate who qualifies for the award of the degree having passed the examination in all the courses in eight semesters (all the six semesters for lateral entry) within a maximum period of eight consecutive semesters after his/her commencement of study in the third semester (from first semester for lateral entry) securing a CGPA of not less than 6.50

## Second Class

- All other candidates passed the examination

## **BREAK OF STUDY FROM A PROGRAMME**

- A candidate is not normally permitted to temporarily break the study. However, if a candidate intends to temporarily discontinue the Programme in the middle of the semester for valid reasons (such as accident or hospitalization due to prolonged ill health) and to rejoin the Programme in a later semester he / she apply to the Head of the Institution in advance, in any case, not later than the last date for registering for the semester in question, through the Head of the Department stating the reasons thereof.
- The candidates permitted to rejoin the Programme after break of study shall be governed by the rules and regulation in force at the time of rejoining.
- The duration specified for passing all the courses for the purpose of classification shall be increased by the period of such break of study permitted.

## **BREAK OF STUDY FROM A PROGRAMME**

- The total period for completion of the Programme reckoned from, the commencement of the first semester to which the candidate was admitted shall not exceed the maximum period specified irrespective of the period of break of study in order that he/she may be eligible for the award of the degree.
- If any student is detained for want of required attendance, progress and good conduct, the period spent in that semester shall be considered as permitted 'Break of study'.

# BEST PRACTICES



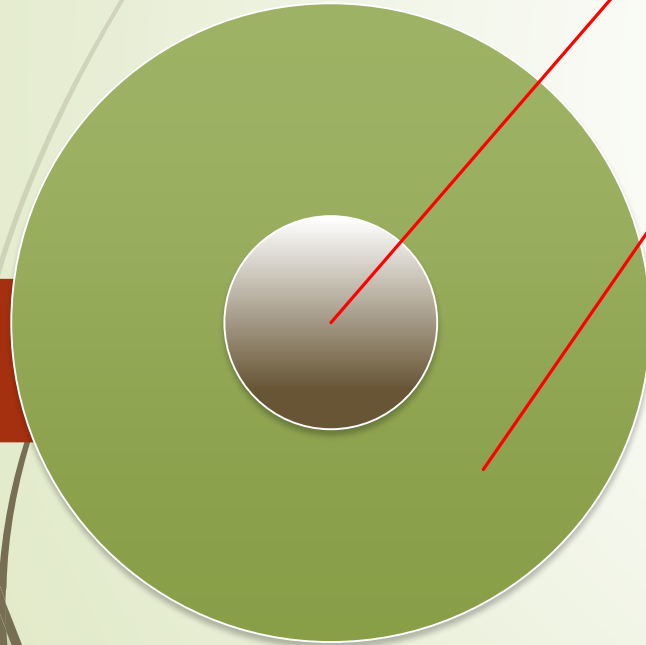


# STUDENT PROGRESSION & SUPPORT



# STUDENTS ADVISORY SUPPORTS

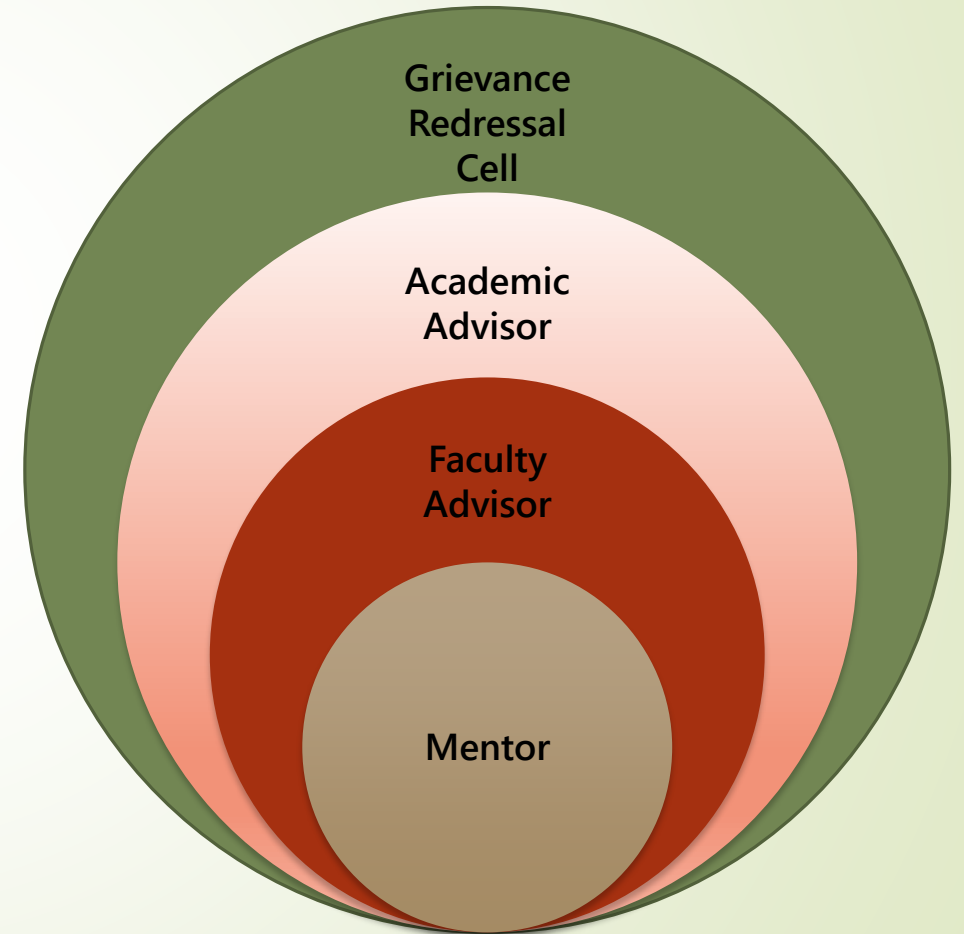
ADVISORY COMMITTEE



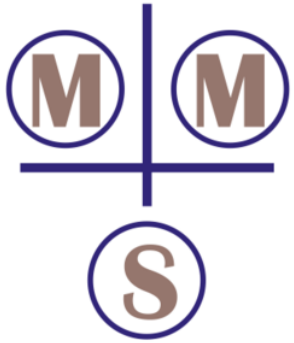
Course  
Level  
committee

Class  
committee

- STUDENT ADVISORY STRUCTURE



# MONITORING & MENTORING SYSTEMS



- ✓ A group of 20 to 25 Students are assigned to a Mentor to monitor and Counsel
- ✓ Mentors of Students are monitoring in Academic and Personal Matters
- ✓ Mentors are Guiding and Counselling the Students
- ✓ Extra Classes for Advanced Learners
- ✓ Special Class for Slow Learners
- ✓ Motivating them for their future development

**BHARATH INSTITUTE OF HIGHER EDUCATION & RESEARCH**  
(DEEMED UNIVERSITY)  
SELAYUR, CHENNAI - 600 073

Adm. No.	Name of the Student	CET Rank	Date of Birth	Registration Number	Admitted on	Branch	Course
	S. YAJNIN		22/11/99	112319	04/11/2017	SCM	BTech
E-mail		Hobbies	Games	Library Skill	Res/Grd	Others	
yashin@bharath.ac.in		Singing, dancing	shuttle		B+		
Name and Address of the Parent			Name and Address of the Guardian				
S. NISHAN BAJAJ, 3-87/8, H-3-JET, PUNE, CHITTOOR (AP)							
Tel. Cell: 94 9492402		Tel. Cell:					
Tel. Res / OR		Tel. Res / OR:					
E-mail		E-mail:					

Name of Proctor: N. SATHISHAN

SEMESTER 1								SEMESTER 2							
Roll No.	Cycle Test 1	Cycle Test 2	Mini Exam	1st Exam	2nd Exam	Grds	Exam Cleared	Roll No.	Cycle Test 1	Cycle Test 2	Mini Exam	1st Exam	2nd Exam	Grds	Exam Cleared
Eng	89	90	90	70	65	S	Pass	Eng	65	60	78	90	93	S	Pass
Mat	70	70	85	75	88	S	Pass	Mat	88	60	100	95	93	S	Pass
Phy	70	70	75	70	75	A	Pass	Phy	50	72	70	80	84	A	Pass
Chem	85	82	87	83	90	S	Pass	Chem	50	75	75	75	77	S	Pass
IT	75	75	75	75	75	A	Pass	IT	55	50	50	70	87	A	Pass
CS	75	80	75	80	75	S	Pass	CS	54	60	50	80	85	A	Pass
ME	80	88	90	70	85	A	Pass	ME	85	92	65	85	75	A	Pass
BEE	48	70	75	80	86	A	Pass	BEE	60	100	50	75	90	S	Pass
Avg	74	80	83	75	80			Avg	70	82	80	85	80		
Roll No.								Roll No.							
Signature								Signature							

Inward Training at \_\_\_\_\_  
Inward Training Duration \_\_\_\_\_  
Whether Submitted Attendance Certificate \_\_\_\_\_

HOC's Signature: *Kishu*  
Dean / Principal Signature: \_\_\_\_\_

## **FACULTY ADVISOR**

- ✓ To monitor student academic performance and its implications on planning their courses of study and for providing general advice on the academic Programme, the concerned School/Department will assign for every 60 to 70 students a faculty member who will be called the **Faculty Adviser**

# ACADEMIC ADVISOR

- To either assist the student in career planning or to refer student to campus resources for such assistance.
- To be knowledgeable about the program(s) for which he/she is advising and be familiar with published academic rules and regulations of the University
- To inform the student of degree requirements.
- To communicate and emphasize the student's responsibility for satisfying degree requirements in terms of credit earnings and pre-requisites.
- To approve the course registration of the student at the department level
- To consider and approve the application for adding / dropping / auditing of courses
- To guide the students while applying for readmission / transfer etc.
- To help student plan a suitable schedule of classes, at least one semester in advance.



# STUDENTS PROFESSIONAL SOCIETIES & ACTIVITIES

Aero

- Indian Concrete Institute-Students Chapters



Auto

- SAE INDIA – Collegiate Club



CSE

- IEEE Aerospace & Electronic Systems Society – Students Chapter
- IEEE Signal Processing Society – Students Chapter



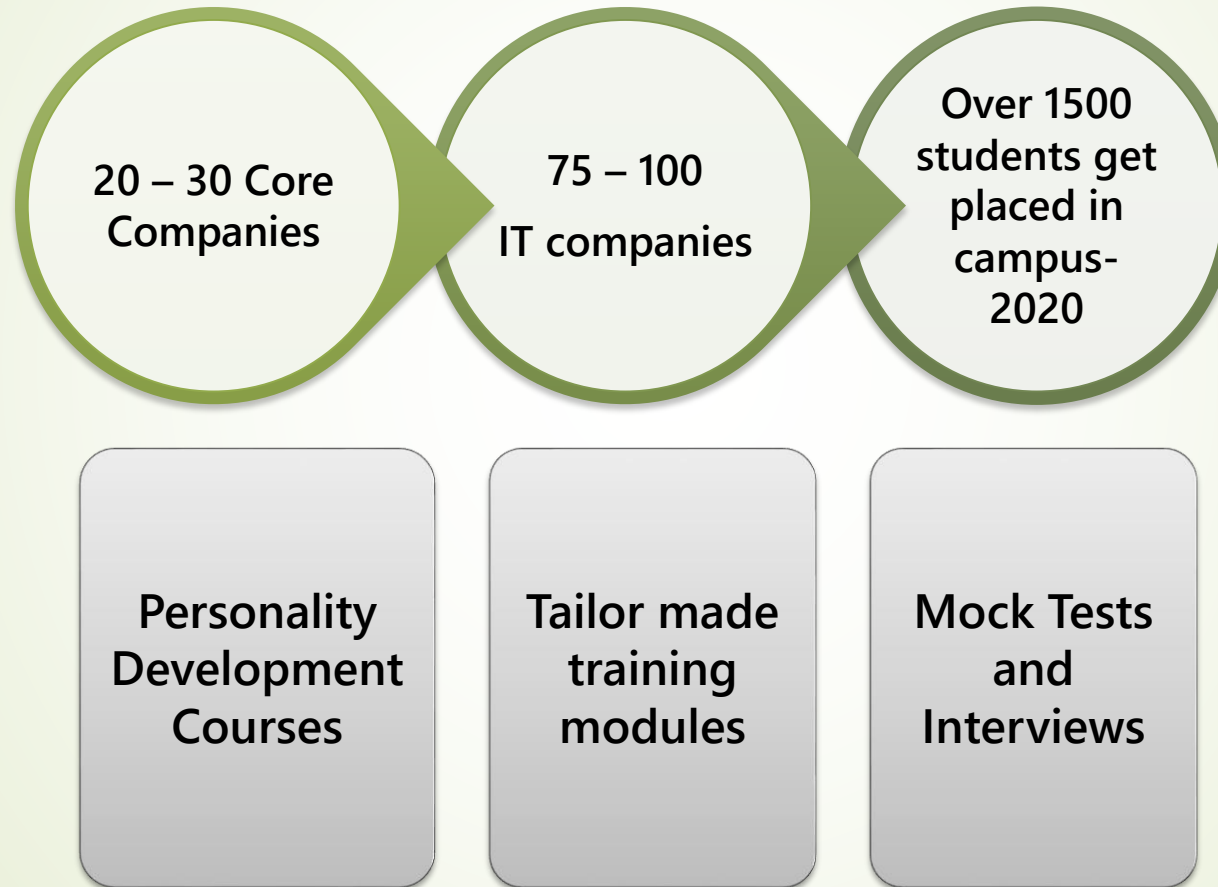
MBA

- IEEE Power Electronics Society – Students Chapter

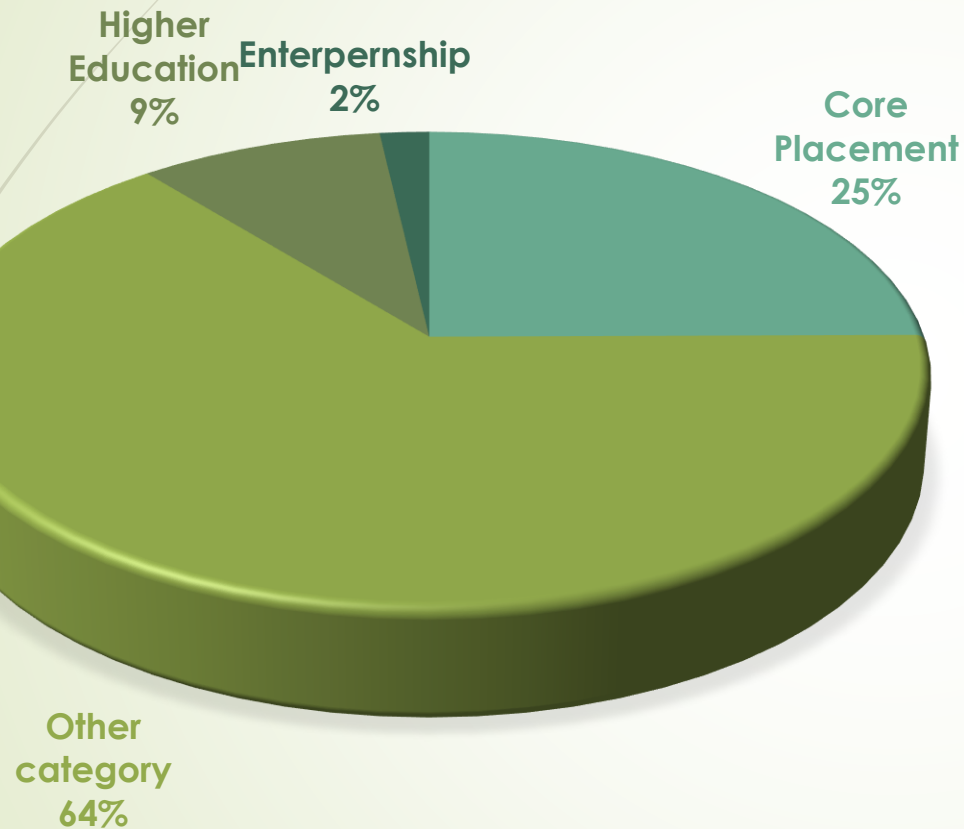




# CAMPUS PLACEMENT(2020-21)

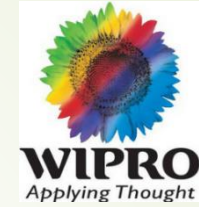


## Placement Statistics-2020-21 ( in %)



<b>Total no. of students Enrolled</b>	<b>2380</b>
Total no. of students Graduated	2237
Core Placement	437
Other category	1129
Higher Education	159
Entrepreneurship	32

# Some of Recruiters











# Sports and Games facilities

82

- **Basket Ball**
- **Volley Ball**
- **Foot Ball**
- **Throw Ball**
- **Cricket**
- **Table Tennis**
- **Badminton**
- **Chess**
- **Carom**
- **Athletes**





# Sports and Games facilities

83



## Differently-able Students

### Differently-able Students

- By paying special attention through providing convenient hostel accommodation,
- Fees concession
- Library facilities,
- convenient seating arrangement
- separate seating arrangement during Examinations.



## Library resources

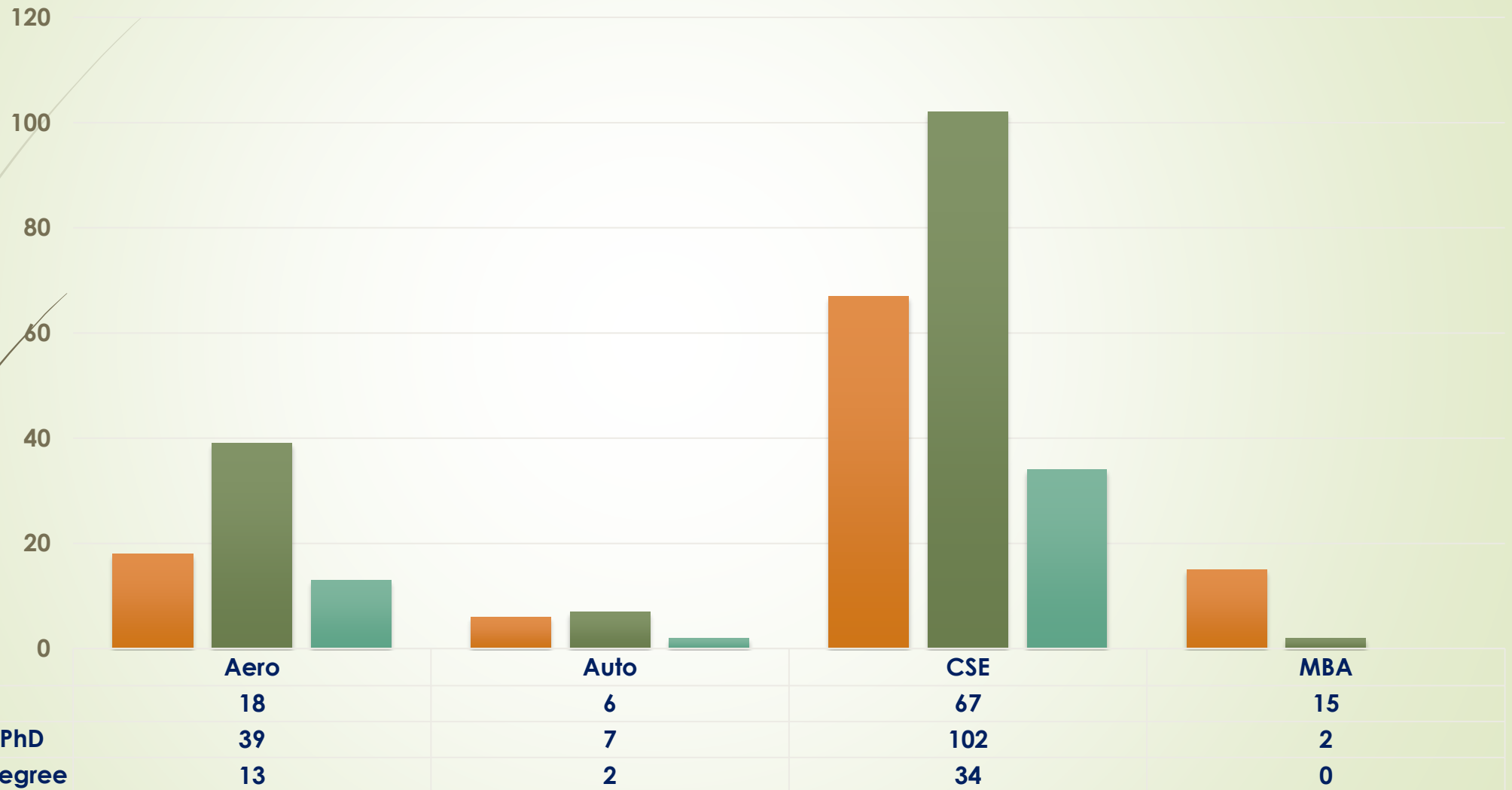
Details	Print			Avg. No of Books added during last 3 years	NON Print (Microfiche, AV)	Electronics(e-books, e-journals)	Special Collections( text books, reference books)
	Books	Back Vol.	Thesis				
<b>BIST</b>	<b>3,66,501</b>	<b>2073</b>	<b>10264</b>	<b>15000</b>	<b>5697</b>	<b>E-Books-1544310 E-Journals-8480+</b>	<b>Reference books:69,482 Book Banks:3610</b>



# HUMAN RESOURCE DEVELOPMENT



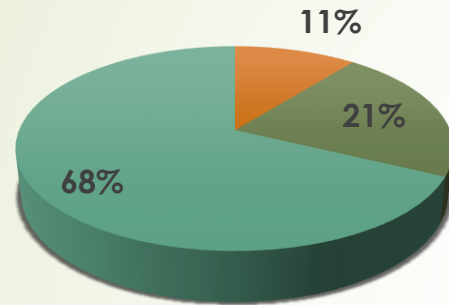
# Teachers Quality (Qualification)



# Teachers Quality (Designation)

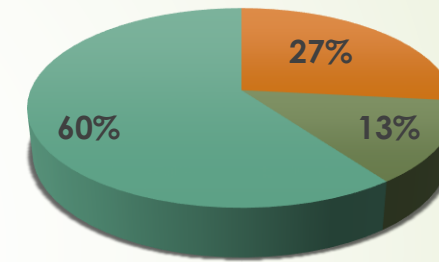
## Aero

PROFESSOR ASSO. PROF ASST. PROF



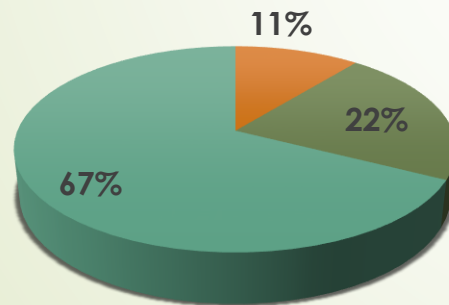
## Auto

PROFESSOR ASSO. PROF ASST. PROF



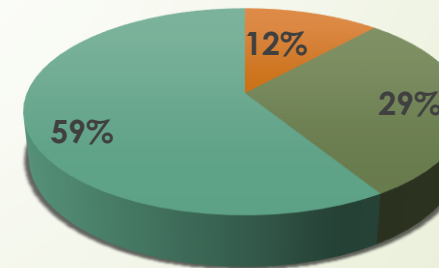
## CSE

PROFESSOR ASSO. PROF ASST. PROF



## MBA

PROFESSOR ASSO. PROF ASST. PROF

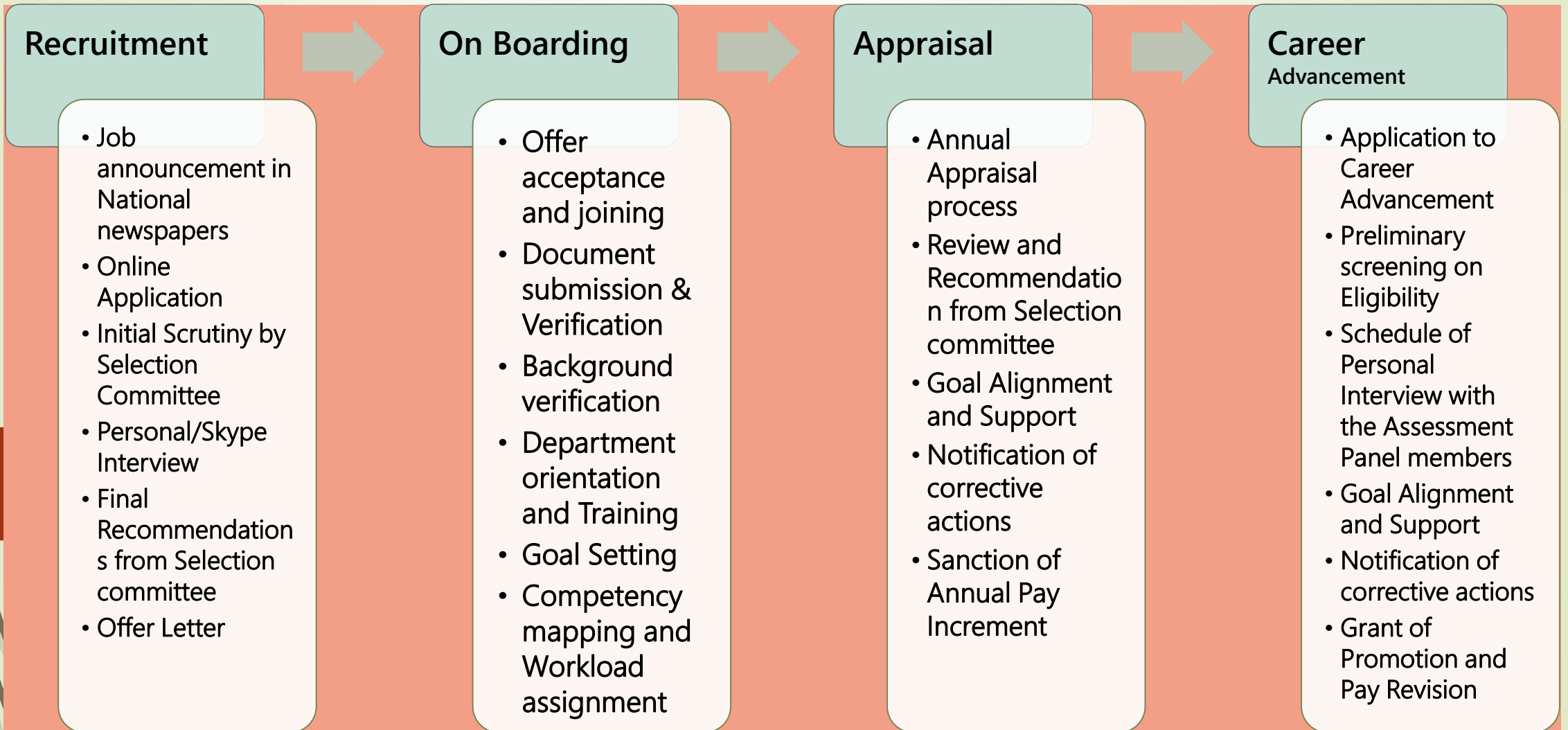




# Teachers Quality (Research Contribution-Last 5 years)

Department	Aero	Auto	CSE	MBA
Research publications	529	512	1432	464
International conferences	135	129	887	161
National Conference	347	267	1128	387
Seminars	459	402	1364	451
Patents	12	28	66	14

# RECRUITMENT & CAREER ADVANCEMENT



# INCENTIVES & HR COVER

Incentives	HR Cover
<ul style="list-style-type: none"><li>◆ Funding for attending International Conferences</li><li>◆ Incentives for Research Publications on reputed journals</li><li>◆ Research grant for Pilot projects</li><li>◆ Equity on Consultancy projects</li></ul>	<ul style="list-style-type: none"><li>◆ Group Insurance cover</li><li>◆ Medical Insurance</li><li>◆ Employment Provident Fund</li><li>◆ Free Transport</li><li>◆ Annual Vacation</li><li>◆ Flexible Work timing</li><li>◆ Concession for Medical treatments in Balaji Hospital</li><li>◆ Fee concession for wards of employees in Bharath Group of Institutions based on their terms of service</li></ul>

## Staff Welfare Measures

- **Medical Insurance Scheme for all staff**
- **Financial support to Faculty's family marriages**
- **Maternity and Paternal leave for faculty members with salary**
- **Free medical treatment for faculty members and their dependents.**
- **Solatum to faculty members and families in case of calamities/accidents.**
- **Educational support to the children of the faculty members.**
- **Interest free housing loan for staff members**
- **Retirement benefits to staff who have served for more than 20 years.**
- **Promotions are based on experience, performance and research contributions as per UGC guidelines**
- **Free Transport for faculty for transport to campus**

# BUDGET PLANNING & ALLOCATION

- Sourced from Faculty Members and Committees
- Consolidated and Forwarded

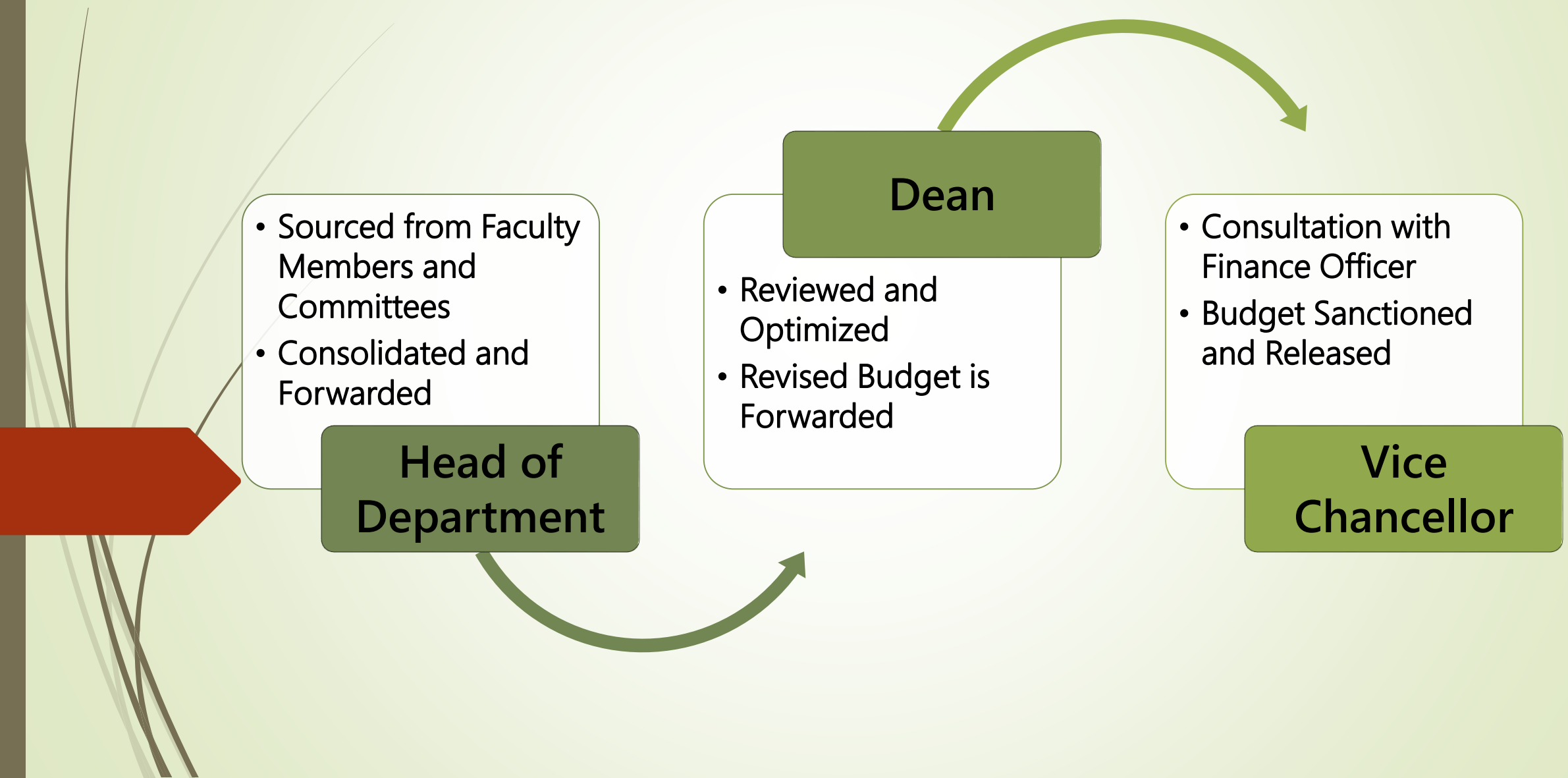
**Head of Department**

- Reviewed and Optimized
- Revised Budget is Forwarded

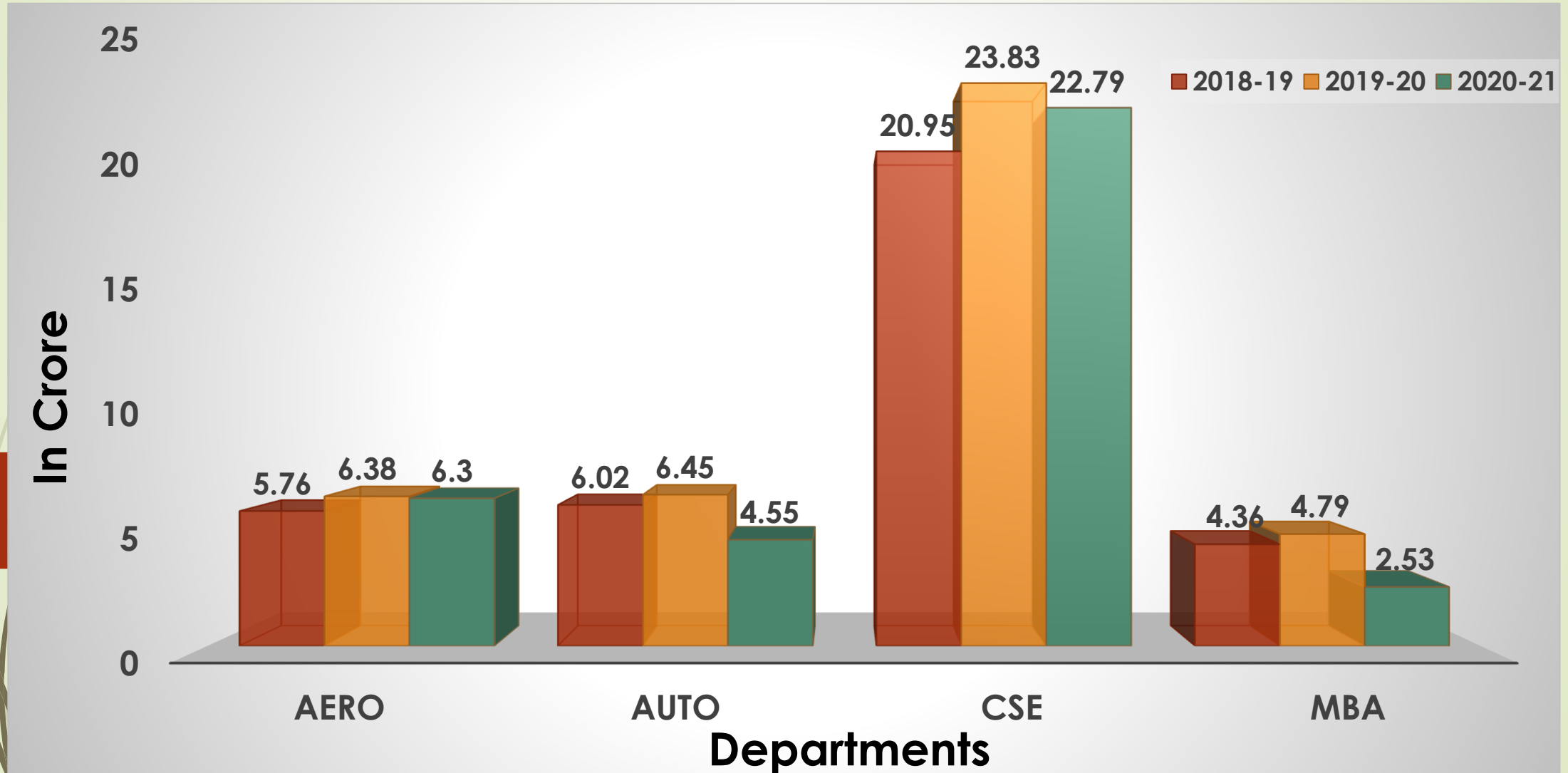
**Dean**

- Consultation with Finance Officer
- Budget Sanctioned and Released

**Vice Chancellor**



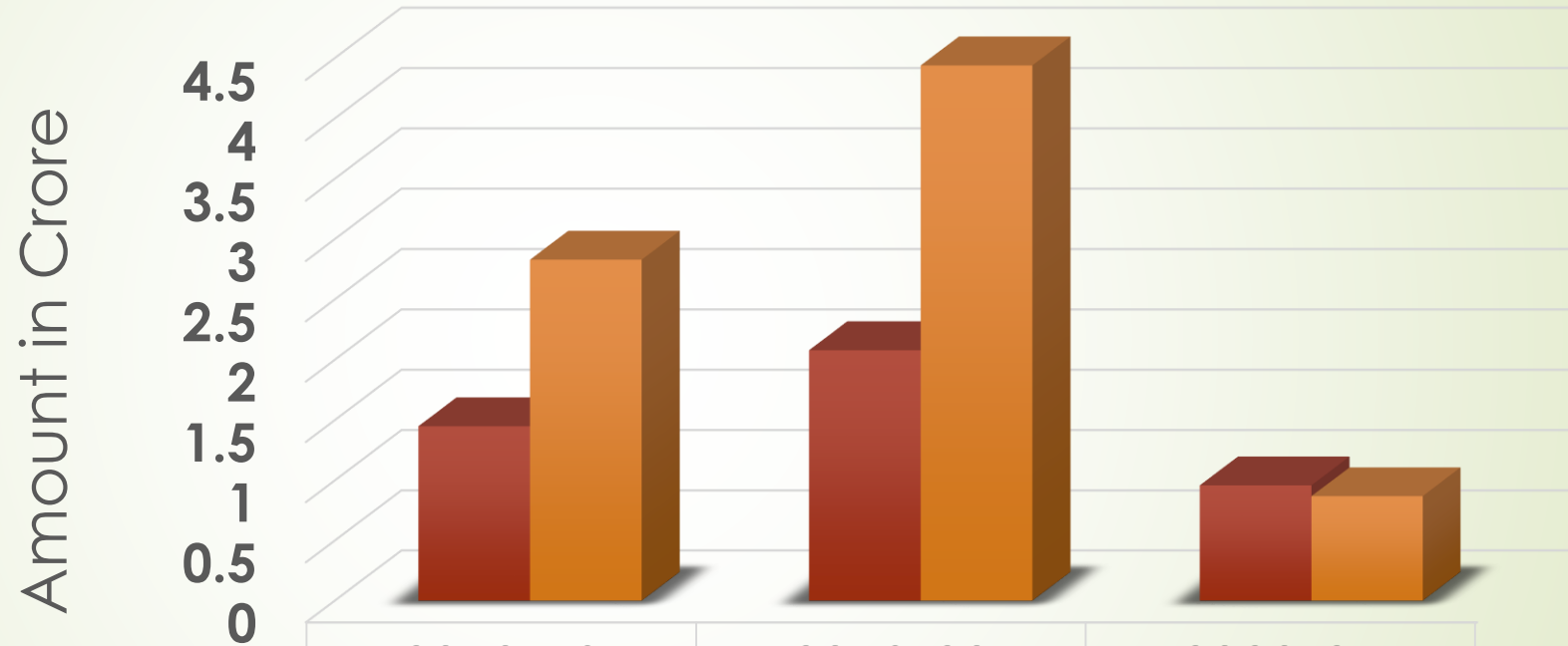
# BUDGETARY SUPPORT





# FINANCIAL SUPPORT

Financial assistance provided to Faculty Members



■ Attending Conference	2018-19	2019-20	2020-21
	1.45	2.08	0.96
■ Travel Support	2.83	4.44	0.87

# **SPECIAL FEATURES**





BIHAR NCC UNIT





COASTAL CLEAN UP

# SAFETY MEASURES

- ◆ Warning signboards
- ◆ Round the clock Security patrolling
- ◆ In-house security system
- ◆ Electronic surveillance
- ◆ Emergency Helpline numbers
- ◆ Entry / exit in hostels monitored
- ◆ Ambulance facilities
- ◆ Mock Fire Drills in High Rise Buildings
- ◆ Automatic fire extinguishing system in multistory buildings
- ◆ Road shows and workshops on student safety by government agencies





# ENVIRONMENTAL CONSIIOUSNESS

- Solar Power Panels for Energy Management
- Solar Concentrator for Hostel Cooking Purposes
- Rain Water Storage Management System
- Solid Waste Management through Vermi Compost Production for Nursery
- Waste Water Recycling



# Future plans for starting new courses

101

- ✓ BIHER strives to promote interdisciplinary learning with 12 different disciplines such as Health economics, Data sciences, Theology, Music, Liberal Arts etc.,
- ✓ 50% of BIHER's programs will be interdisciplinary by 2025, 75% in 2030 and 100% by 2035 – Tuned as per the needs of National & International Importance.

2022 - 2027		2027 - 2032		2032 - 2037	
UG	PG	UG	PG	UG	PG
Aerospace Engineering (Computational Intelligence)	Aircraft Propulsion & Power Systems	Acoustics Engineering	Architectural Acoustics	Computational Mathematical Technology	Scientific Computing
Natural Gas & pipe lining Engineering	Ocean Technologies	Petro Informatics	Energy Sciences Engineering	Semiconductor Process Engineering	Bio-inspired Robotics Engineering
Informatics & Drug Design	Composite Fluid Structure Engineering	Creative Intelligence & Innovation Technologies	Forensic Security	Gravitational Sciences & Engineering	Engineering System Design
Engineering Science & Mechanics	Materials Engineering	Smart Connected Autonomous Vehicle Engineering	Unmanned Aircraft Systems Engineering	Quantum Engineering	Membrane Technology
Nuclear & Radiological Engineering	Oil Drilling & Ocean Technologies.	Alternate Energy Engineering	Green Engineering Technology	Photonics Engineering	Optical Signals, Devices, and System
Occupational Therapy	Sports Medicine Modular Genetics	Optometry	Rehabilitation & Regenerative Medicine	Nano Medicine	Oncology (Medical & Surgical), Informatics
Speech & Hearing Language Program	Palliative Medicine Emergency & Trauma Care	Clinical Nutrition Global Health & Social Medicine	Travel Medicine Transgender Medicine	Cyber Clinical Psychology	Cyber Forensics

*Thank you*

